



# High Performance Microwave Cable Assemblies

## Features

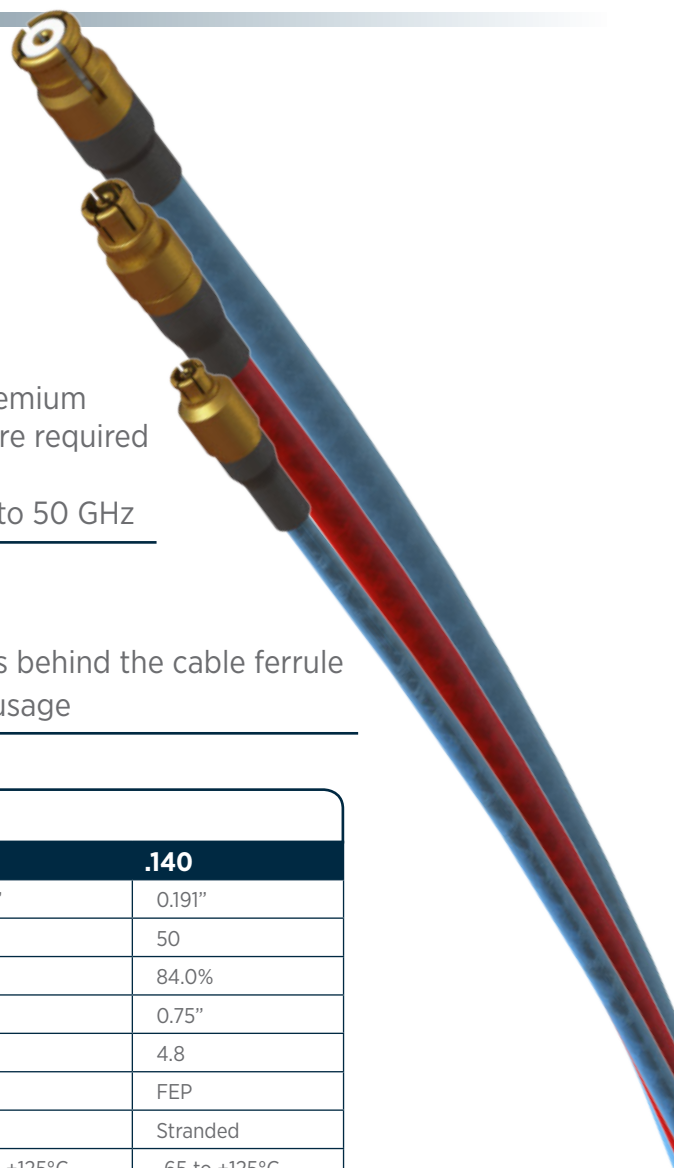
- Standard and custom cable options available
- Fits all standard interfaces including:  
SMA, 2.92mm, 2.4mm, SMP, SMPM & SMPS
- Four unique cable options for any application

## Applications per Cable

- $\varnothing$ .047: Short cable runs where space and weight are at a premium
- $\varnothing$ .065: Short cable runs where high flexibility and low loss are required
- $\varnothing$ .085: Flexible replacement to  $\varnothing$ .085 semi-rigid
- $\varnothing$ .140: Lab test cables and low loss rugged applications up to 50 GHz

## Benefits

- Low solder wicking and high flexibility allows for tight bends behind the cable ferrule
- High flex-life ensures excellent performance after repeated usage



## Specifications

	.047	.065	.085	.140
Jacket Diameter	0.056"	0.075"	0.104"	0.191"
Cut-Off Frequency (GHz)	50+	50+	50+	50
Velocity of Propagation	70.0%	80.0%	69.5%	84.0%
Min Internal Bend Radius (Static)	0.10"	0.39"	0.25"	0.75"
Weight (lbs / 100 ft)	3.5	0.9	1.5	4.8
Jacket Material	FEP	FEP	FEP	FEP
Center Conductor	Solid	Solid	Solid	Stranded
Temperature Rating	-65 to +125°C	-65 to +125°C	-65 to +125°C	-65 to +125°C
Shielding Effectiveness (dB, 0-18 GHz)	> 90 dB	> 90 dB	> 90 dB	> 90 dB
Jacket Color	Blue	Red	Blue	Red
SV Part Number	200-70-214	200-70-309	200-70-139	200-70-324

## Characteristics at a Glance

Property	.047	.065	.085	.140
Flexibility	★★★	★★★	★★	★
Attenuation	★	★★	★★	★★★
Durability	★	★	★★	★★★

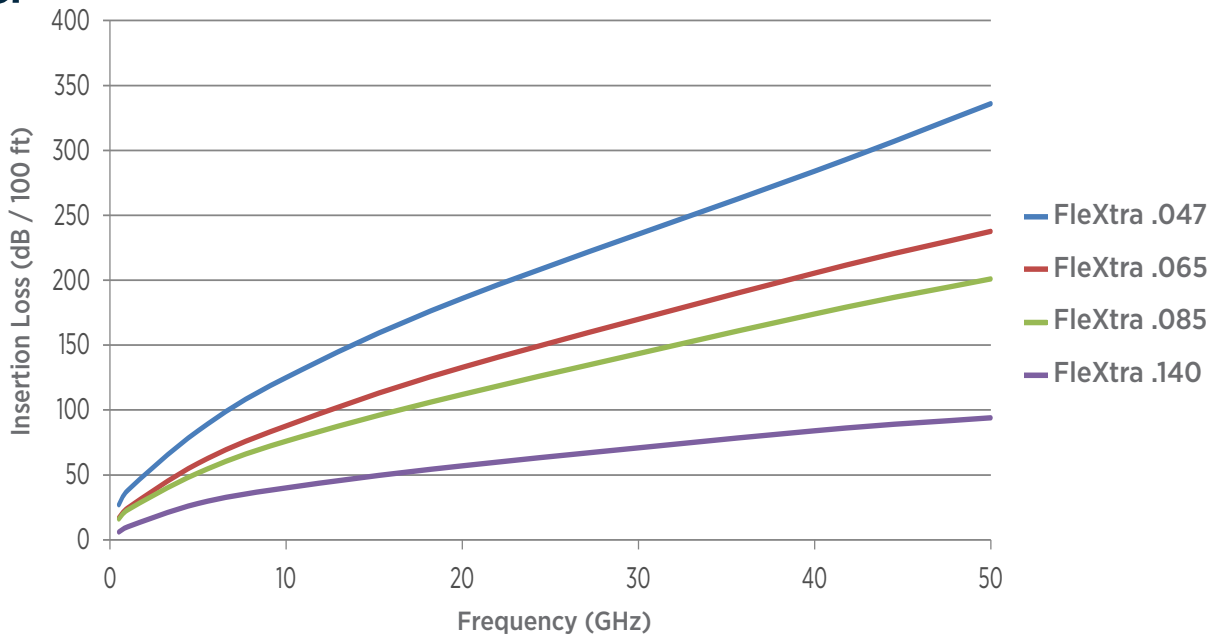
Good ★  
Better ★★★  
Best ★★★★★



O: 561.840.1800  
marketing@svmicrowave.com

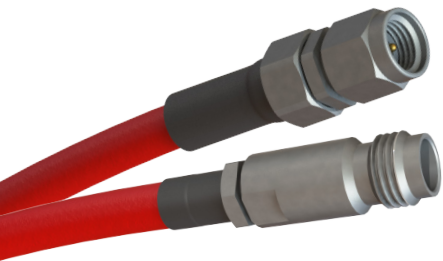


## Attenuation v. Frequency (Typical)

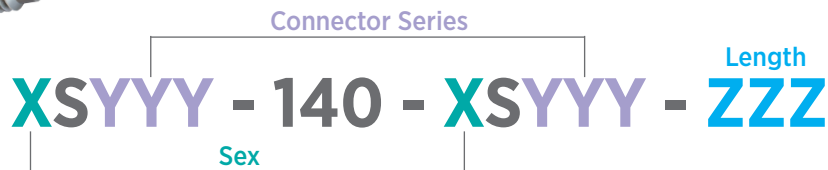


## Flextra® Lab Test Cables

- Durable armored lab test cables
- Low loss and rugged cable assemblies for field applications
- Tape wrapped Teflon (84% V of P) for minimal attenuation



## C/A Part Number Builder



- Step 1:** Select Connector 1 Sex  
**Step 2:** Select Connector 1 Series  
**Step 3:** Select Connector 2 Sex

- Step 4:** Select Connector 2 Series  
**Step 5:** Specify Cable Length (±1.0" increments)

Connector 1		Connector 2		Cable
Step 1	Step 2	Step 3	Step 4	Step 5
Sex	Series	Sex	Series	Length
F	292	M	24	120

**Example:**

<b>Part Number</b>	<b>FS292 - 140 - MS24 - 120</b>
<b>Description</b>	Female 2.92mm to Male 2.4mm 12.0" cable assembly.

Steps 1 & 3 Sex	
Male	<b>M</b>
Female	<b>F</b>

Steps 2 & 4 Series	
2.92mm (40 GHz)	<b>292</b>
2.4mm (50 GHz)	<b>24</b>

Step 5 Length		
Min		Max
12.0"	<b>120</b>	99.0"
	<b>990</b>	



Amphenol

O: 561.840.1800

marketing@svmicrowave.com

Rev. 4 (05/15)