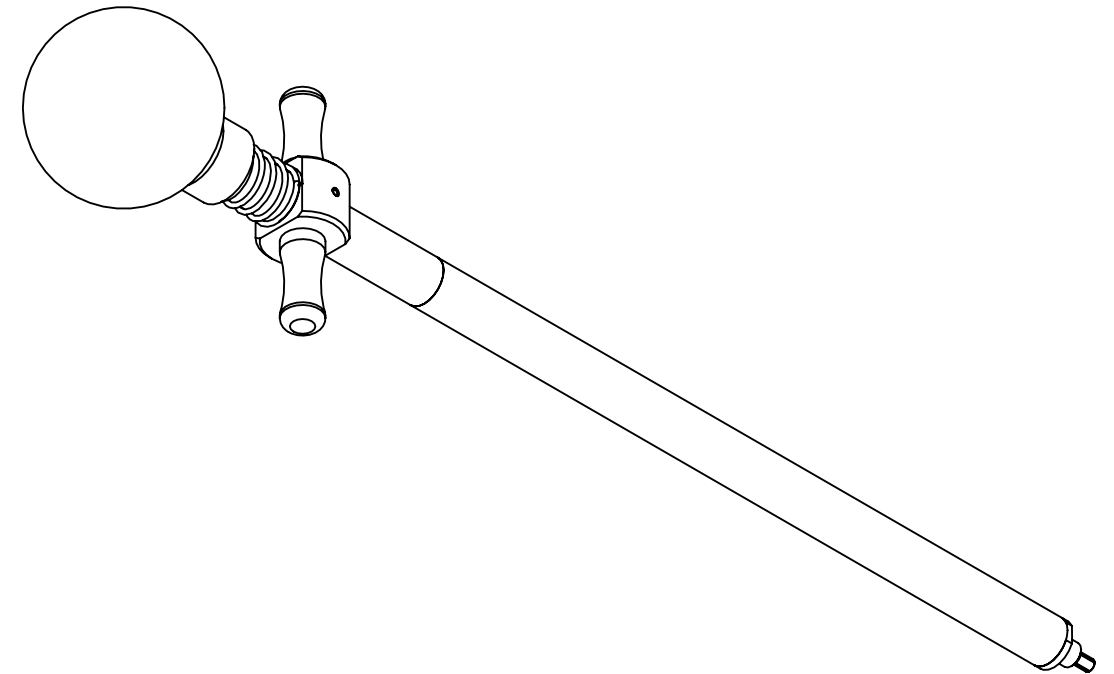
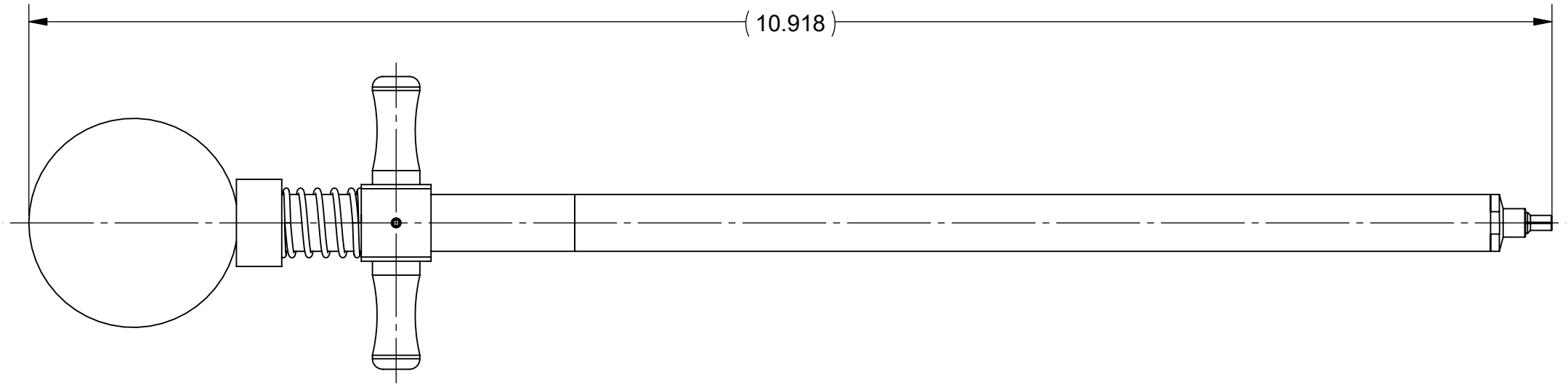
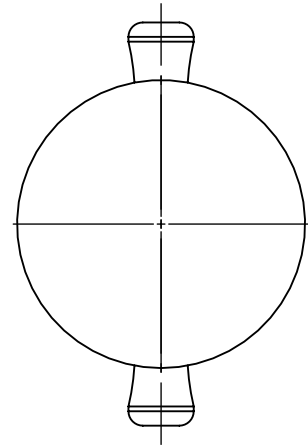


PRODUCT DATA DRAWING

REVISION HISTORY			
REV	DESCRIPTION	DATE	APPROVED
-	NRN 47539	06/23	SEE PDM



MATERIAL:

- KNOB:** PHENOLIC PLASTIC
- SHAFT, TUBE, TIP, SLEEVE, & EXTENSION BAR:** STAINLESS STEEL PER AMS 5640, ALLOY UNS S30300, TYPE 1 OR ASTM A582 TYPE 303, CONDITION A.
- COLLET:** BERYLLIUM COPPER PER ASTM B196, ALLOY No. UNS C17300, TD04.
- FINGER GRIP:** ALUMINUM ALLOY PER AMS-QQ-A-200/8 ALLOY 6061-T6 OR ASTM B211 ALLOY 6061-T6
- COMPRESSION SPRING:** MUSIC WIRE
- SPRING PIN:** 18-8 STAINLESS STEEL

FINISH:

- SHAFT, TUBE, TIP, SLEEVE, & EXTENSION BAR:** PASSIVATED PER AMS-2700
- COLLET:** NICKEL PER AMS-QQ-N-290, CLASS 1, GRADE G

NOTE:
1. THIS TOOL INSERTS AND REMOVES THE SEPARABLE VITA 67.3 SMPM BACKPLANE CONTACT INTERFACE.

MATERIAL: SEE NOTES	DIMENSIONS ARE IN INCHES TOLERANCES: FRACTIONAL: ±1/64 ANGULAR: X° ±1'0" X'X' ±15'	UNLESS OTHERWISE SPECIFIED 1) ALL DIMENSIONS ARE IN INCHES (MILLIMETERS) 2) ALL DIMENSIONS ARE AFTER PLATING. 3) BREAK CORNERS & EDGES .005 R. MAX. 4) CHAM. 1ST & LAST THREADS. 5) SURFACE ROUGHNESS 63-MIL-STD-10. 6) DIA: 'S ON COMMON CENTERS TO BE CONCENTRIC WITHIN .005 T.I.R. 7) REMOVE ALL BURRS	
FINISH: SEE NOTES	DECIMAL: X ±.030 .XX ±.010 .XXX ±.005	INTERPRET DIMENSIONS AND TOLERANCES PER ASME Y14.5M - 1994	
SURFACE AREA: N/A	THIRD ANGLE PROJECTION	DRAWN: JPM 06/21/23	TITLE: V67.3 SMPM BULLET REMOVAL TOOL
<p>PROPRIETARY</p> <p>THE INFORMATION CONTAINED IN THIS DRAWING IS THE SOLE PROPERTY OF SV MICROWAVE, INC. ANY REPRODUCTION IN PART OR AS A WHOLE WITHOUT THE WRITTEN PERMISSION OF SV MICROWAVE, INC IS PROHIBITED.</p>		CHECKED: SEE PDM	SIZE DWG. NO. B 500-32-053
		APPROVED: SEE PDM	SCALE: 1:1 SHEET 1 OF 1