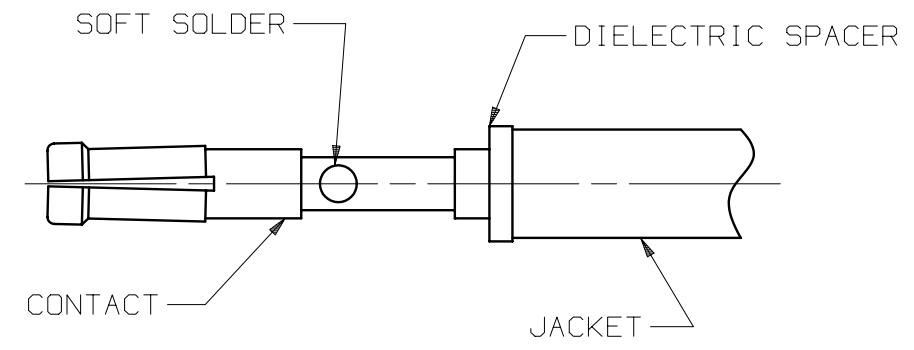


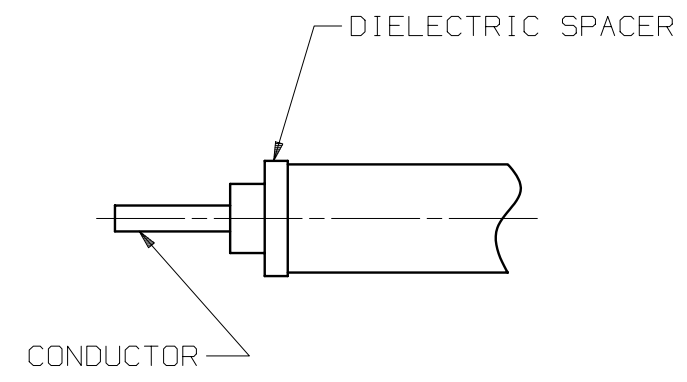
STEP 1

TRIM CABLE TO DIMENSION SHOWN.



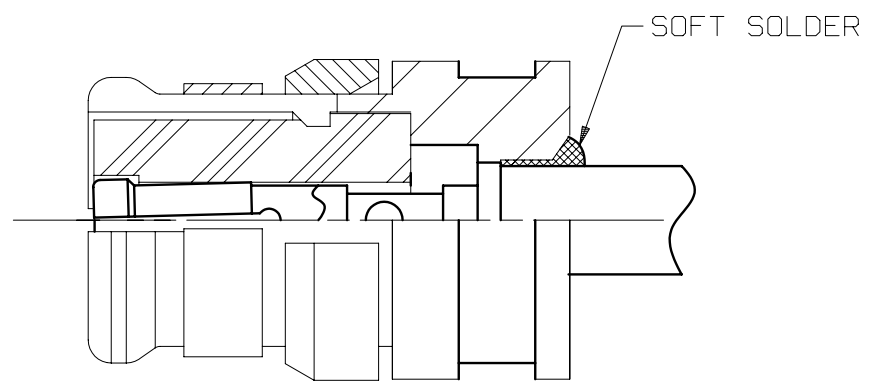
STEP 3

PLACE CONTACT ONTO CENTER CONDUCTOR AND BOTTOM AGAINST SPACER. SOLDER CONTACT IN PLACE USING SN96 SOLDER. REMOVE EXCESS SOLDER.



STEP 2

PLACE DIELECTRIC SPACER ONTO CABLE CONDUCTOR & BOTTOM AGAINST CABLE DIELECTRIC/JACKET.



STEP 4

INSTALL CABLE ASSEMBLY INTO BODY UNTIL BOTTOMED AND SOFT SOLDER CABLE IN PLACE AS SHOWN. REMOVE EXCESS SOLDER.

| SYM. | DESCRIPTION | DATE | APPR. | UNLESS OTHERWISE SPECIFIED: 1) ALL DIMENSIONS ARE AFTER PLATING. 2) BREAK CORNERS & EDGES .005 R. MAX. 3) CHAM. 1s1 & LAST THDS. 4) SURFACE ROUGHNESS 63 / MIL-STD-10. 5) DIAS. ON COMMON CENTERS TO BE CONCENTRIC WITHIN .004 T.I.R. 6) REMOVE ALL BURRS. | DIMENSIONS ARE IN INCHES TOLERANCES: | | | SV Microwave, Inc. 2400 Centrepark West Drive, Suite 100 West Palm Beach, FL 33409 |
|------|----------------|-------|-------|--|---|----------------------------------|--|--|
| | | | | DECIMALS .X ±.030 .XX ±.015 .XXX ±.005 | FRACTIONAL ±1/64 | ANGULAR X° ±1°0' X°X' ±15' | TITLE: CABLE ASSEMBLY INSTRUCTIONS | |
| - | REL. NRN 31356 | 05/04 | STW | | MATERIAL: N/A | □" AREA: N/A | DWG. NO. 300-12-008 | |
| | | | | DRAWN: JMC 05/10/04 | FINISH: N/A | | | |
| | | | | CHECKED: STW 05/10/04 | SIZE B | CAGE NO. 95077 | SCALE 12X | |
| | | | | APPROVED: STW 05/10/04 | | | | |