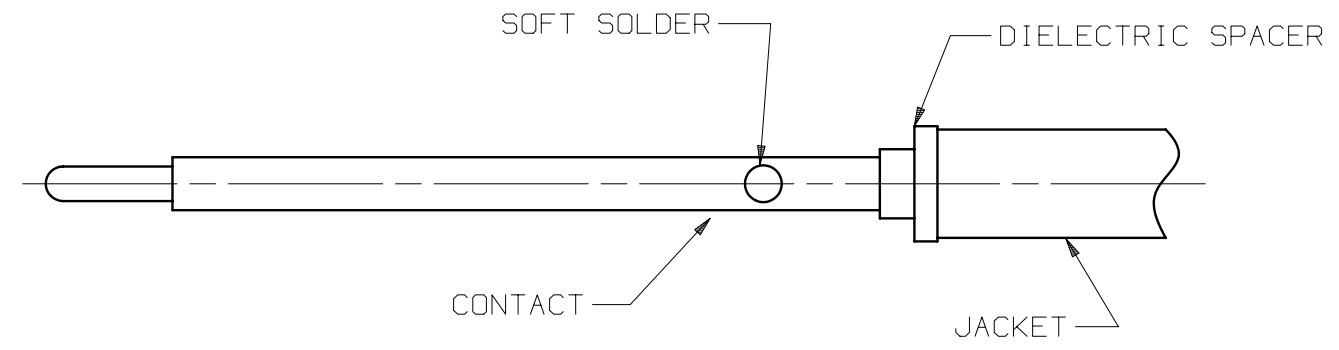
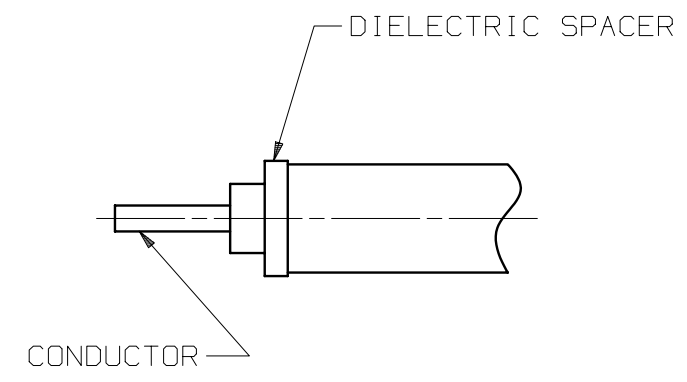


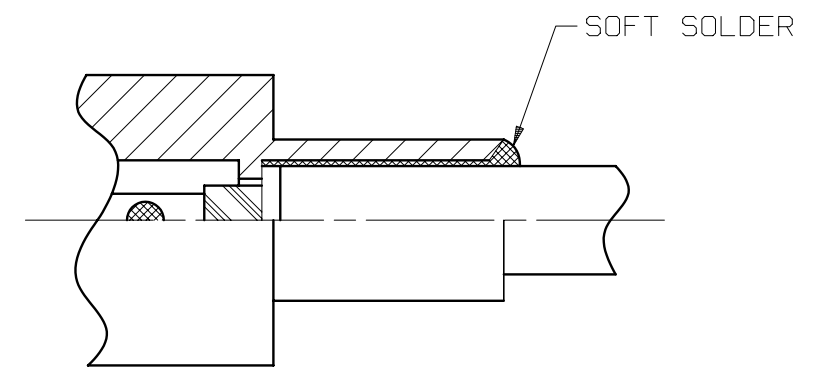
STEP 1
TRIM CABLE TO DIMENSION SHOWN.



STEP 3
PLACE CONTACT ONTO CENTER CONDUCTOR AND BOTTOM AGAINST SPACER. SOLDER CONTACT IN PLACE USING SN96 SOLDER. REMOVE EXCESS SOLDER.



STEP 2
PLACE DIELECTRIC SPACER ONTO CABLE CONDUCTOR & BOTTOM AGAINST CABLE DIELECTRIC/JACKET.



STEP 4
INSTALL CABLE ASSEMBLY INTO BODY UNTIL BOTTOMED AND SOFT SOLDER CABLE IN PLACE AS SHOWN. REMOVE EXCESS SOLDER.

SYM.	DESCRIPTION	DATE	APPR.	UNLESS OTHERWISE SPECIFIED: 1) ALL DIMENSIONS ARE AFTER PLATING. 2) BREAK CORNERS & EDGES .005 R. MAX. 3) CHAM. 1s1 & LAST THDS. 4) SURFACE ROUGHNESS 63 / MIL-STD-10. 5) DIAS. ON COMMON CENTERS TO BE CONCENTRIC WITHIN .004 T.I.R. 6) REMOVE ALL BURRS.	DIMENSIONS ARE IN INCHES TOLERANCES:			SV Microwave, Inc. 2400 Centrepark West Drive, Suite 100 West Palm Beach, FL 33409
				DECIMALS .X ±.030 .XX ±.015 .XXX ±.005	FRACTIONAL ±1/64	ANGULAR X° ±1°0' X°X' ±15'	TITLE: CABLE ASSEMBLY INSTRUCTIONS	
-	REL. NRN 32230	10/04	JMC		MATERIAL:	N/A	□" AREA:	
					DRAWN:	VMJ 10/22/04	FINISH:	N/A
					CHECKED:	JMC 10/25/04	SIZE	B
					APPROVED:	JMC 10/25/04	CAGE NO.	95077
							SCALE	12X
							DWG. NO.	300-12-012