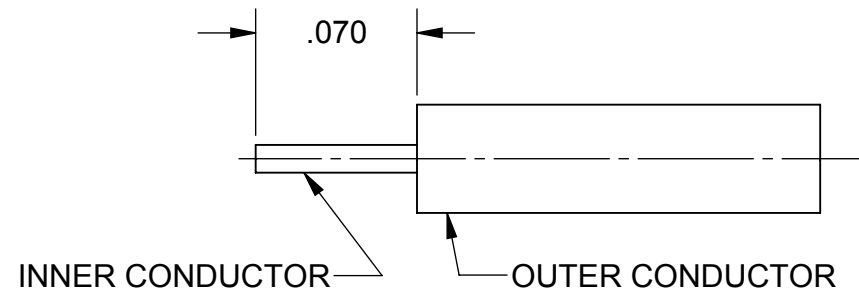
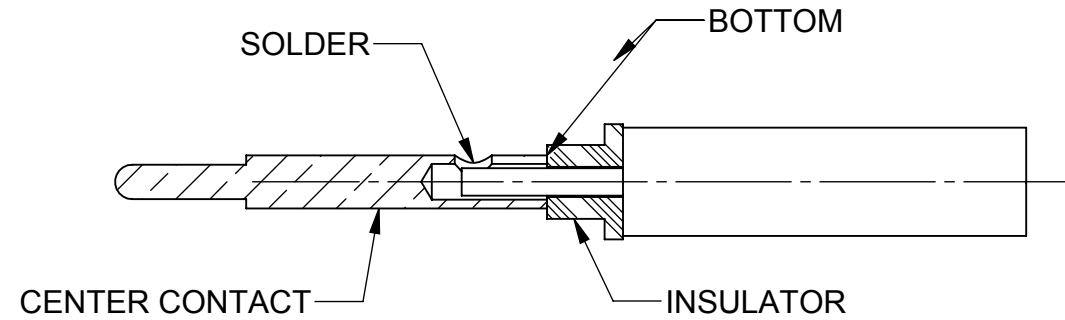


REVISION HISTORY			
REV	DESCRIPTION	DATE	APPROVED
-	NRN 35914	03/10	STW

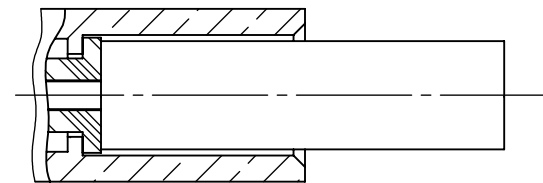


STEP 1:
TRIM CABLE AS SHOWN.



STEP 2:
BOTTOM INSULATOR AND CENTER CONTACT AS SHOWN.
SOFT SOLDER.

STEP 3:
BOTTOM CABLE SUB-ASSEMBLY IN CONNECTOR BODY AS SHOWN.
SOFT SOLDER OUTER CONDUCTOR TO FERRULE.



MATERIAL:	N/A	DIMENSIONS ARE IN INCHES TOLERANCES: FRACTIONAL: $\pm 1/64$ ANGULAR: X° $\pm 1'0''$ X'X' $\pm 15'$ DECIMAL: X $\pm .030$.XX $\pm .010$.XXX $\pm .005$ INTERPRET DIMENSIONS AND TOLERANCES PER ASME Y14.5M - 1994	UNLESS OTHERWISE SPECIFIED 1) ALL DIMENSIONS ARE AFTER PLATING. 2) BREAK CORNERS & EDGES .005 R. MAX. 3) CHAM. 1ST & LAST THREADS. 4) SURFACE ROUGHNESS 63 / MIL-STD-10. 5) DIA.'S ON COMMON CENTERS TO BE CONCENTRIC WITHIN .005 T.I.R. 6) REMOVE ALL BURRS	SV Microwave, Inc. 2400 Centrepark West Drive, Suite 100 West Palm Beach, FL 33409	
FINISH:	N/A			TITLE: CABLE ASSEMBLY INSTRUCTIONS	
SURFACE AREA:	N/A			DWG. NO. 300-12-031	
PROPRIETARY THE INFORMATION CONTAINED IN THIS DRAWING IS THE SOLE PROPERTY OF SV MICROWAVE, INC. ANY REPRODUCTION IN PART OR AS A WHOLE WITHOUT THE WRITTEN PERMISSION OF SV MICROWAVE, INC IS PROHIBITED.		THIRD ANGLE PROJECTION 	DRAWN: DAL 03/23/10 CHECKED: STW 03/23/10 APPROVED: STW 03/23/10 E.M. SIMULATION: N/A	SIZE B CAGE CODE 95077	SCALE: 12:1

SF1211-6060
USED ON: