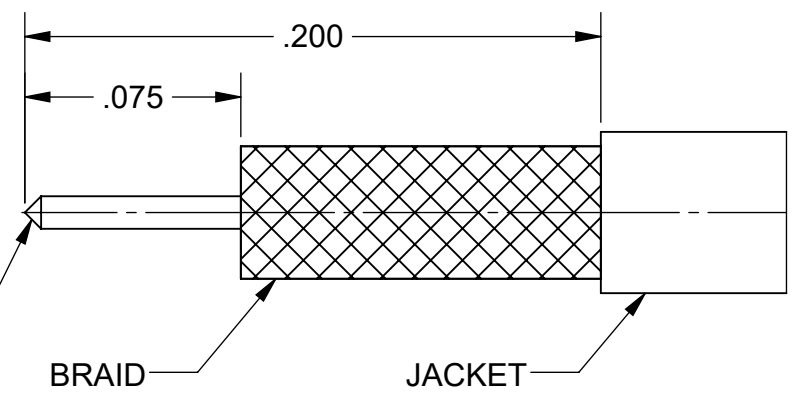


CUI BASIC

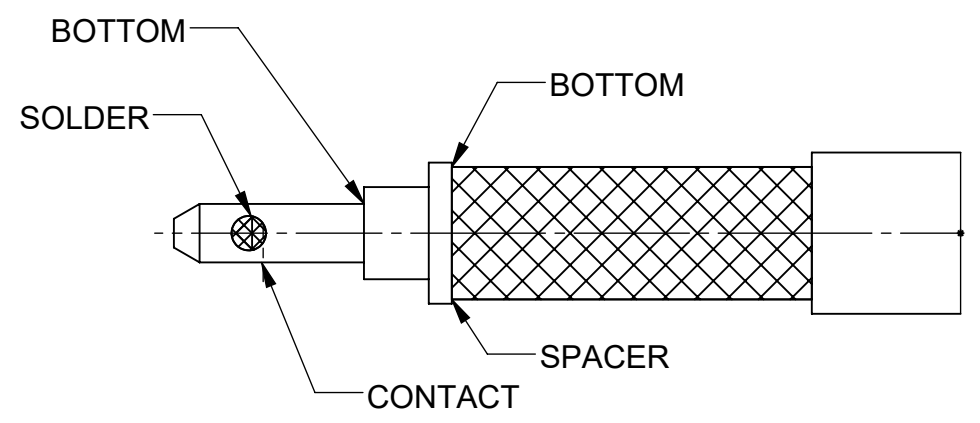
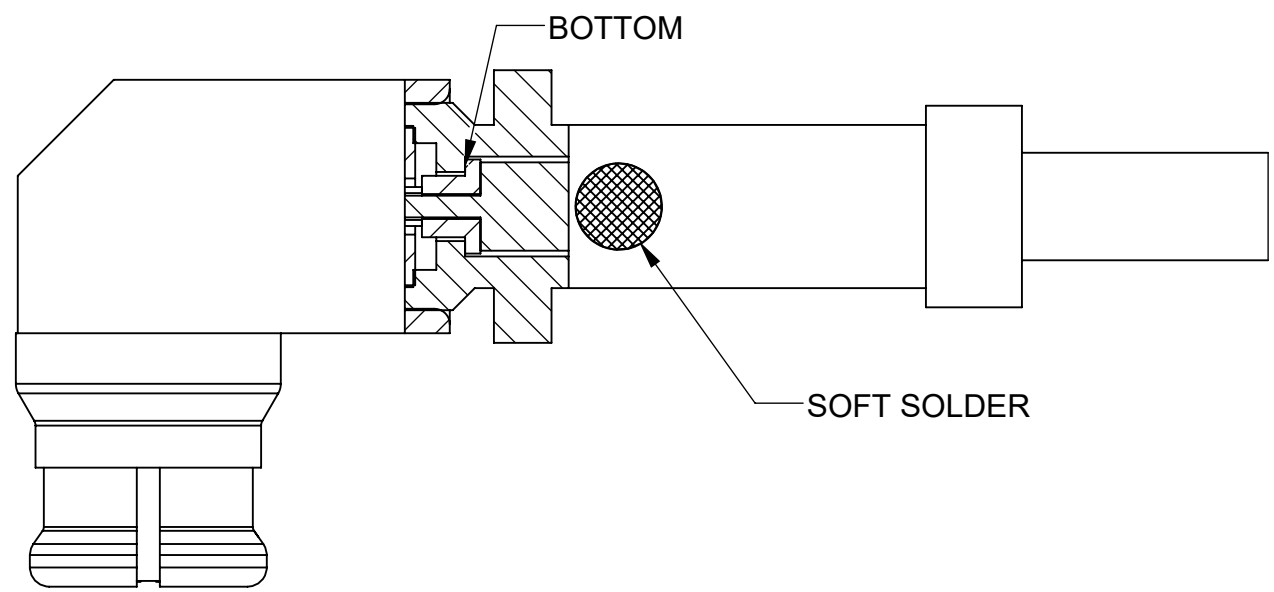
REVISION HISTORY			
REV	DESCRIPTION	DATE	APPROVED
-	NRN 42137	03/18	STW
A	REV. DCN 52627	06/14/23	STW

STEP 1:
 • TIN DIP CABLE FIRST.
 • TRIM TO DIMENSIONS SHOWN.



STEP 3:
 • INSTALL CABLE INTO BODY, BOTTOM CABLE STOP AND SOFT SOLDER CABLE IN PLACE AS SHOWN.
 • SLIDE SHRINK TUBING UP AGAINST BODY AND SHRINK IN PLACE.

STEP 2:
 • ASSEMBLE SPACER ONTO CABLE CONDUCTOR & BOTTOM AGAINST CABLE DIELECTRIC/BRAID, ASSEMBLE CONTACT ONTO CENTER CONDUCTOR AND BOTTOM AGAINST SPACER.
 • SOLDER CONTACT TO CABLE.
 • REMOVE EXCESS SOLDER FROM CONTACT O.D.



MATERIAL:	N/A	DIMENSIONS ARE IN INCHES TOLERANCES:	UNLESS OTHERWISE SPECIFIED	 2400 Centrepark West Drive, Suite 100 West Palm Beach, FL 33409
FINISH:	N/A	FRACTIONAL: $\pm 1/64$ ANGULAR: X° $\pm 1^{\circ}0'$ X°X' $\pm 15'$	1) ALL DIMENSIONS ARE AFTER PLATING. 2) BREAK CORNERS & EDGES .005 R. MAX. 3) CHAM. 1ST & LAST THREADS. 4) SURFACE ROUGHNESS 63 / MIL-STD-10. 5) DIA.'S ON COMMON CENTERS TO BE CONCENTRIC WITHIN .004 T.I.R. 6) REMOVE ALL BURRS	
SURFACE AREA:	N/A	DECIMAL: X $\pm .030$.XX $\pm .010$.XXX $\pm .005$	INTERPRET DIMENSIONS AND TOLERANCES PER ASME Y14.5M - 1994 DRAWN: JMS 03/13/18 CHECKED: STW 03/13/18 APPROVED: STW 03/13/18 E.M. SIMULATION: N/A	
PROPRIETARY THE INFORMATION CONTAINED IN THIS DRAWING IS THE SOLE PROPERTY OF SV MICROWAVE, INC. ANY REPRODUCTION IN PART OR AS A WHOLE WITHOUT THE WRITTEN PERMISSION OF SV MICROWAVE, INC IS PROHIBITED.		THIRD ANGLE PROJECTION 	TITLE: BODY SIZE B DWG. NO. 300-12-064 SCALE: 4:1	SHEET 1 OF 1

1222-40077
 USED ON: