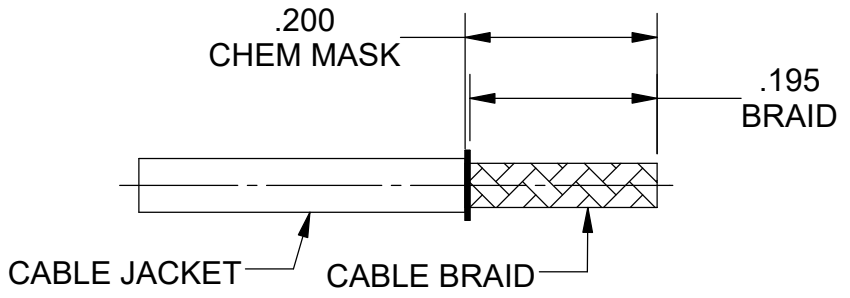
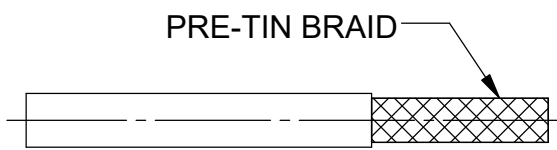


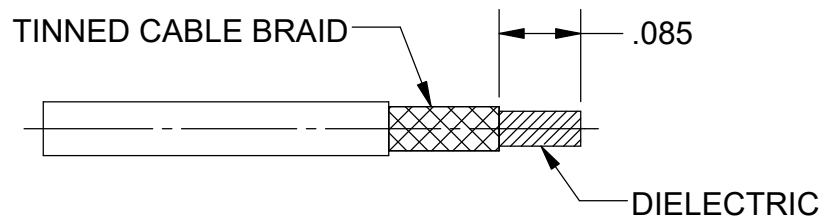
REVISION HISTORY			
REV	DESCRIPTION	DATE	APPROVED
-	NRN 42829	11/18	STW



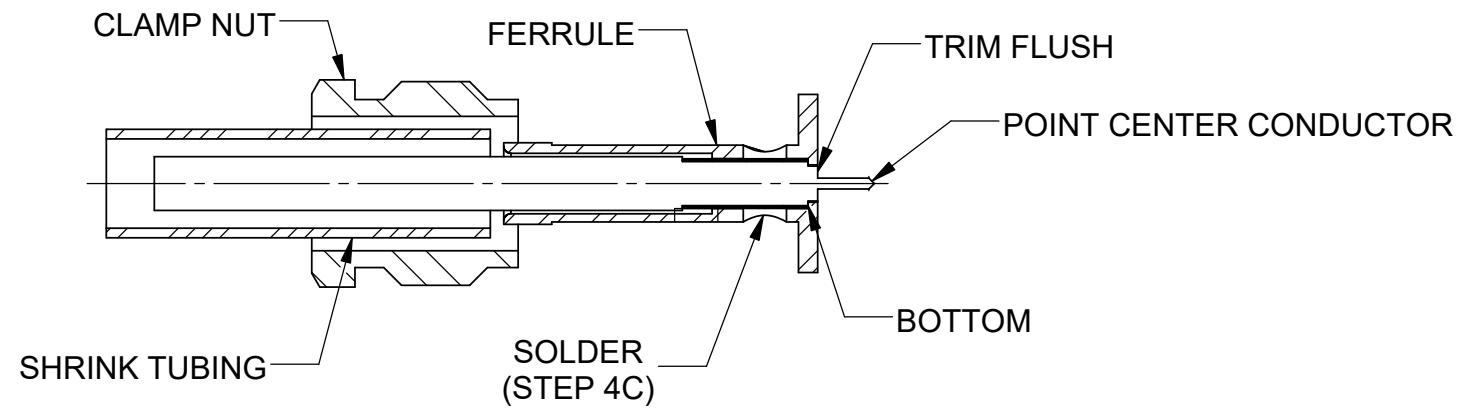
STEP 1:
 A) TRIM CABLE JACKET TO DIMENSIONS SHOWN.
 B) APPLY CHEM MASK TO DIMENSION SHOWN.



STEP 2: PRE-TIN EXPOSED CABLE BRAID UP TO CHEM MASK LINE.



STEP 3: TRIM CABLE BRAID TO EXPOSE DIELECTRIC TO DIMENSION AS SHOWN




STEP 4:
 A) SLIDE CLAMP NUT AND SHRINK TUBING (IF APPLICABLE) ON TO CABLE.
 B) SLIDE FERRULE ONTO CABLE UNTIL CABLE BRAID BOTTOMS WITH FERRULE.
 C) SOLDER CABLE INTO PLACE AS SHOWN.
 D) POINT CENTER CONDUCTOR AND TRIM DIELECTRIC FLUSH TO FERRULE FACE.

MATERIAL:	PER BOM
FINISH:	PER BOM
SURFACE AREA:	N/A
	PROPRIETARY
THE INFORMATION CONTAINED IN THIS DRAWING IS THE SOLE PROPERTY OF SV MICROWAVE, INC. ANY REPRODUCTION IN PART OR AS A WHOLE WITHOUT THE WRITTEN PERMISSION OF SV MICROWAVE, INC IS PROHIBITED.	

DIMENSIONS ARE IN INCHES TOLERANCES:	
FRACTIONAL:	±1/64 ANGULAR: X° ±1'0" X'X' ±15'
DECIMAL:	X ±.030 .XX ±.010 .XXX ±.005
INTERPRET DIMENSIONS AND TOLERANCES PER ASME Y14.5M - 1994	
THIRD ANGLE PROJECTION	

UNLESS OTHERWISE SPECIFIED	
1) ALL DIMENSIONS ARE AFTER PLATING. 2) BREAK CORNERS & EDGES .005 R. MAX. 3) CHAM. 1ST & LAST THREADS. 4) SURFACE ROUGHNESS 63 √ MIL-STD-10. 5) DIA.'S ON COMMON CENTERS TO BE CONCENTRIC WITHIN T.I.R. 6) REMOVE ALL BURRS	
DRAWN:	MKK 11/26/18
CHECKED:	STW 11/27/18
APPROVED:	STW 11/27/18
E.M. SIMULATION:	N/A

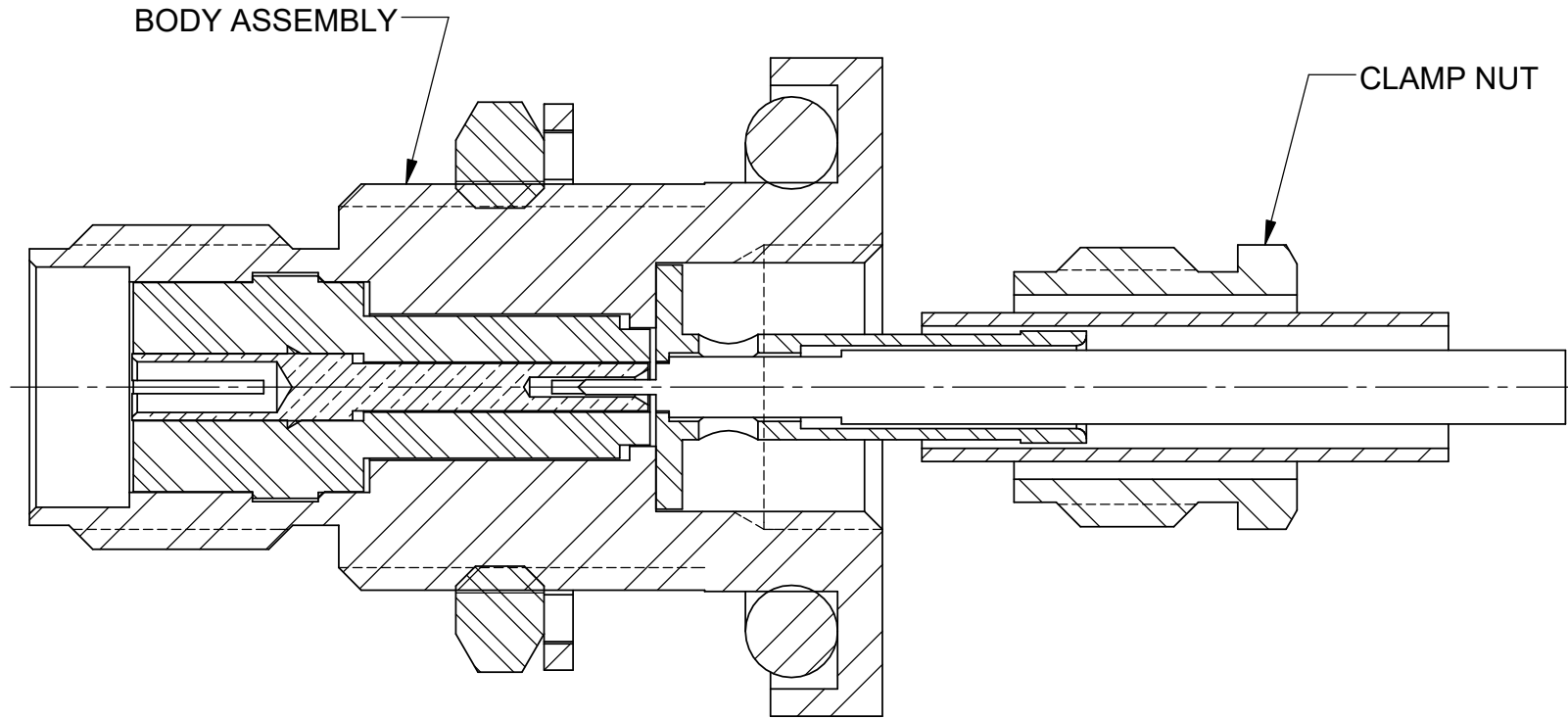

 2400 Centrepark West Drive, Suite 100
 West Palm Beach, FL 33409

TITLE: **CABLE ASSEMBLY INSTRUCTIONS**

SIZE B	CAGE CODE 95077	DWG. NO. 300-29-168
SCALE: 5:1		SHEET 1 OF 2

2921-61257
 USED ON:

REVISION HISTORY			
REV	DESCRIPTION	DATE	APPROVED
-	NRN 42829	11/18	STW



- STEP 5:**
- A) SLIDE SHRINK TUBING FORWARD AND SHRINK IN PLACE.
 - B) CAREFULLY INSERT CABLE ASSEMBLY INTO BODY ASSEMBLY UNTIL THE CENTER CONDUCTOR IS MATED WITH THE CONNECTOR CONTACT.
 - C) SLIDE CLAMP NUT FORWARD INTO BODY ASSEMBLY AND THREAD INTO PLACE. TORQUE TIGHTEN TO 10-12 IN-LBS.

MATERIAL: PER BOM	DIMENSIONS ARE IN INCHES TOLERANCES: FRACTIONAL: ±1/64 ANGULAR: X° ±1°0' DECIMAL: X ±.030 .XX ±.010 .XXX ±.005	UNLESS OTHERWISE SPECIFIED 1) ALL DIMENSIONS ARE AFTER PLATING. 2) BREAK CORNERS & EDGES .005 R. MAX. 3) CHAM. 1ST & LAST THREADS. 4) SURFACE ROUGHNESS 63 √ MIL-STD-10. 5) DIA.'S ON COMMON CENTERS TO BE CONCENTRIC WITHIN .005 T.I.R. 6) REMOVE ALL BURRS	 2400 Centrepark West Drive, Suite 100 West Palm Beach, FL 33409
FINISH: PER BOM	INTERPRET DIMENSIONS AND TOLERANCES PER ASME Y14.5M - 1994	DRAWN: MKK 11/26/18	
SURFACE AREA: N/A	THIRD ANGLE PROJECTION	CHECKED: STW 11/27/18	TITLE: CABLE ASSEMBLY INSTRUCTIONS
PROPRIETARY	THE INFORMATION CONTAINED IN THIS DRAWING IS THE SOLE PROPERTY OF SV MICROWAVE, INC. ANY REPRODUCTION IN PART OR AS A WHOLE WITHOUT THE WRITTEN PERMISSION OF SV MICROWAVE, INC IS PROHIBITED.	APPROVED: STW 11/27/18	SIZE: B CAGE CODE: 95077 DWG. NO.: 300-29-168
2921-61257		E.M. SIMULATION: N/A	SCALE: 5:1 SHEET 2 OF 2
USED ON:			