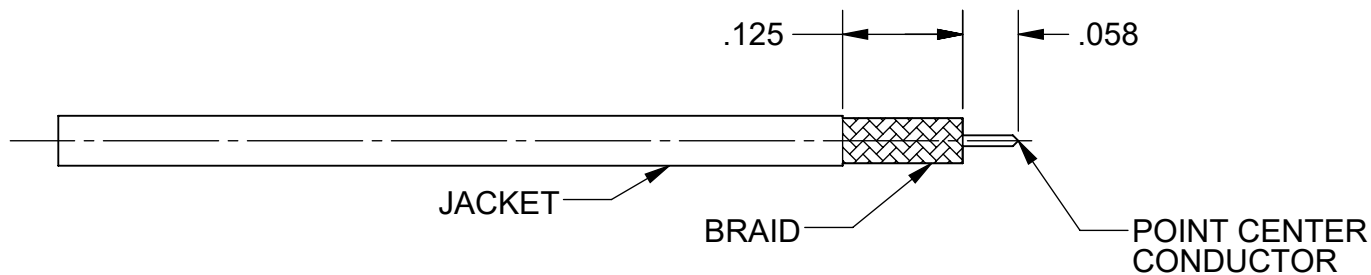
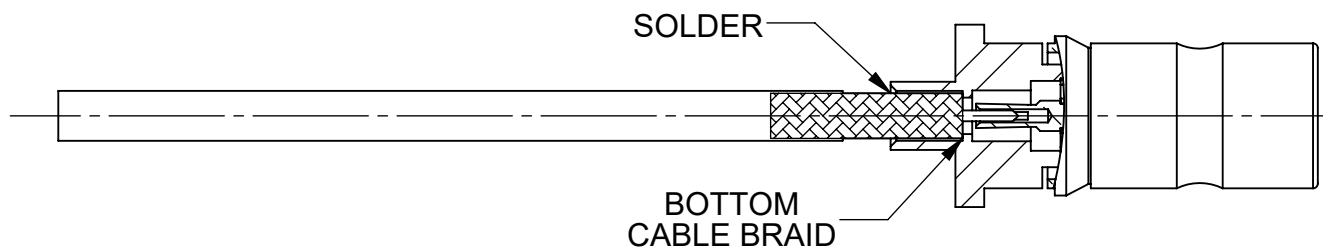


REVISION HISTORY			
REV	DESCRIPTION	DATE	APPROVED
-	NRN 44783	04/20	SEE PDM
A	DCN 51982	09/22	



**STEP 1:**  
 1.1) TRIM CABLE JACKET AND BRAID TO DIMENSIONS SHOWN  
 1.2) TIN DIP CABLE UP TO CABLE JACKET  
 1.3) POINT CENTER CONDUCTOR



**STEP 2:**  
 2.1) INSERT CABLE INTO REAR OF CONNECTOR. BOTTOM CABLE BRAID ON CABLE STOP INSIDE FERRULE.  
 2.2) SOLDER CABLE BRAID TO FERRULE.

MATERIAL:	N/A	DIMENSIONS ARE IN INCHES TOLERANCES: FRACTIONAL: $\pm 1/64$ ANGULAR: $X^\circ \pm 1^\circ 0'$ $X^\circ X' \pm 15'$ DECIMAL: X $\pm .030$ .XX $\pm .010$ .XXX $\pm .005$ INTERPRET DIMENSIONS AND TOLERANCES PER ASME Y14.5M - 1994	UNLESS OTHERWISE SPECIFIED 1) ALL DIMENSIONS ARE AFTER PLATING. 2) BREAK CORNERS & EDGES .005 R. MAX. 3) CHAM. 1ST & LAST THREADS. 4) SURFACE ROUGHNESS 63 / MIL-STD-10. 5) DIA.'S ON COMMON CENTERS TO BE CONCENTRIC WITHIN .005 T.I.R. 6) REMOVE ALL BURRS	
FINISH:	N/A			
SURFACE AREA:	N/A			
PROPRIETARY THE INFORMATION CONTAINED IN THIS DRAWING IS THE SOLE PROPERTY OF SV MICROWAVE, INC. ANY REPRODUCTION IN PART OR AS A WHOLE WITHOUT THE WRITTEN PERMISSION OF SV MICROWAVE, INC IS PROHIBITED.		THIRD ANGLE PROJECTION 	DRAWN: JPM 04/23/20 CHECKED: SEE PDM APPROVED: SEE PDM E.M. SIMULATION: N/A	TITLE: CABLE ASSEMBLY INSTRUCTIONS SIZE DWG. NO. B 300-32-067 SCALE: 5:1 SHEET 1 OF 1

3211-60326  
 USED ON: