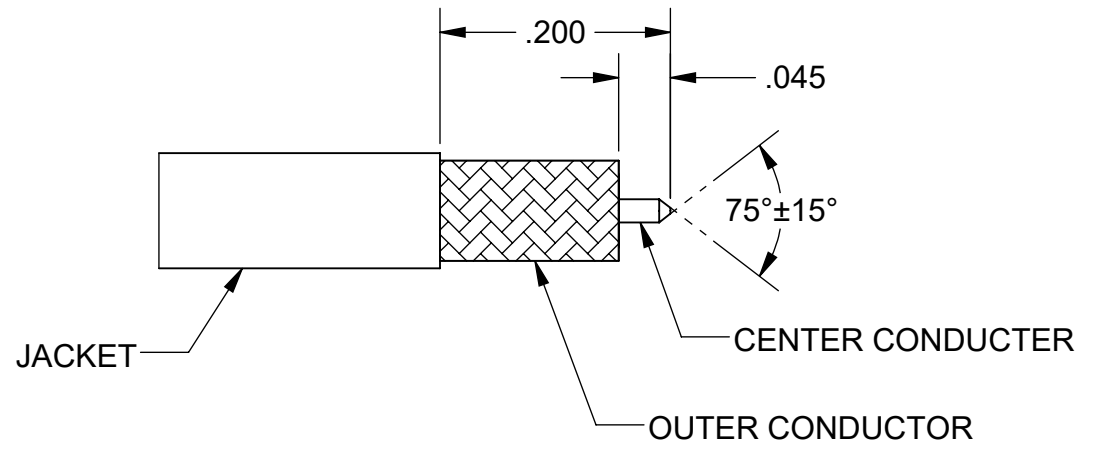
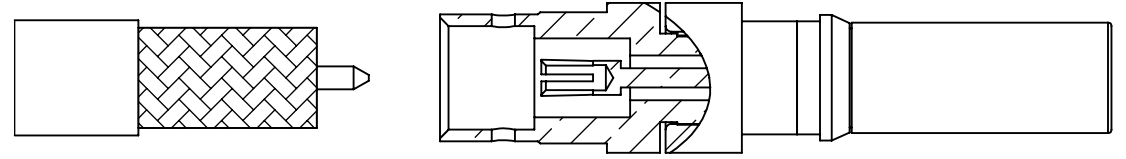


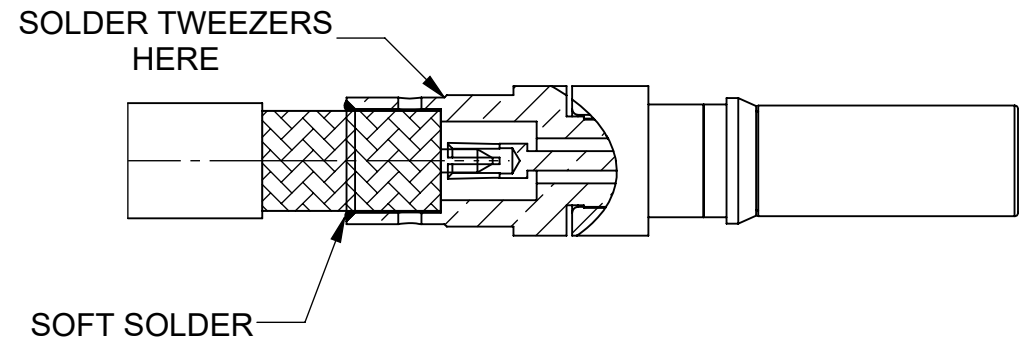
REVISION HISTORY			
REV	DESCRIPTION	DATE	APPROVED
-	DCN 51092	10/21	SEE PDM
A	DCN 52411	03/23	



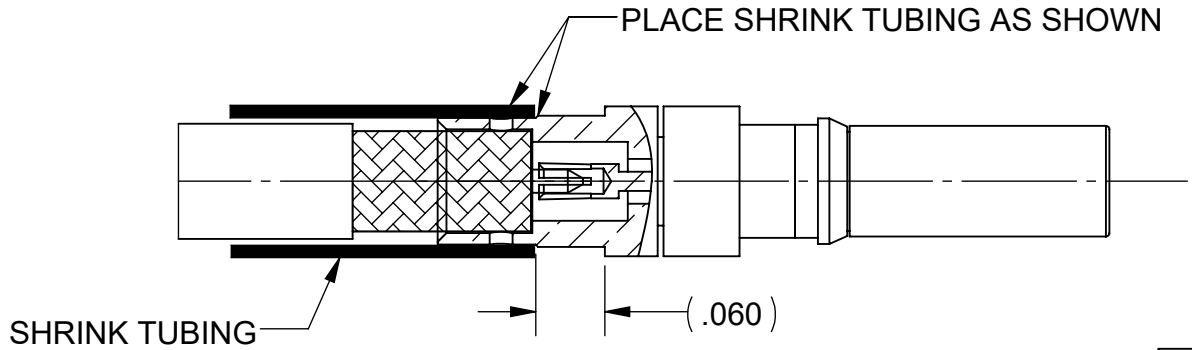
**STEP 1.**  
TRIM CABLE TO DIMENSIONS SHOWN. BE CAREFUL NOT TO NICK THE CENTER CONDUCTOR. POINT CENTER CONDUCTOR.




**STEP 2.**  
INSERT PREPARED CABLE INTO CONNECTOR ASSEMBLY, CENTER CONDUCTOR WILL ENTER A SOCKET CONTACT.



**STEP 3.**  
SOLDER USING MINIMAL HEAT AND LIMITED TIME AS REQUIRED. PLACE SOLDER TWEEZERS AT LOCATION SHOWN, **THIS IS A CRITICAL REQUIREMENT.**



**STEP 4.**  
PLACE SHIRNK TUBING AS SHOWN ON FERRULE. KEEP SHRINK TUBING AWAY FROM SHOULDER AS SHOWN. **THIS IS A CRITICAL REQUIREMENT.**

MATERIAL:	N/A	DIMENSIONS ARE IN INCHES TOLERANCES:	UNLESS OTHERWISE SPECIFIED	 www.svmicrowave.com
FINISH:	N/A	FRACTIONAL: $\pm 1/64$ ANGULAR: X° $\pm 1'0''$ X°X' $\pm 15''$	1) ALL DIMENSIONS ARE AFTER PLATING. 2) BREAK CORNERS & EDGES .005 R. MAX. 3) CHAM. 1ST & LAST THREADS. 4) SURFACE ROUGHNESS 63 / MIL-STD-10. 5) DIA.'S ON COMMON CENTERS TO BE CONCENTRIC WITHIN .004 T.I.R. 6) REMOVE ALL BURRS	
SURFACE AREA:	N/A	DECIMAL: X $\pm .030$ .XX $\pm .010$ .XXX $\pm .005$	INTERPRET DIMENSIONS AND TOLERANCES PER ASME Y14.5M - 1994	TITLE: CABLE ASSEMBLY INSTRUCTIONS
PROPRIETARY THE INFORMATION CONTAINED IN THIS DRAWING IS THE SOLE PROPERTY OF SV MICROWAVE, INC. ANY REPRODUCTION IN PART OR AS A WHOLE WITHOUT THE WRITTEN PERMISSION OF SV MICROWAVE, INC IS PROHIBITED.		THIRD ANGLE PROJECTION	DRAWN: BFB 10/05/21 CHECKED: SEE PDM APPROVED: SEE PDM E.M. SIMULATION: N/A	SIZE DWG. NO. 300-38-023 SCALE: 2:1 SHEET 1 OF 1
SF3811-60059	USED ON:			