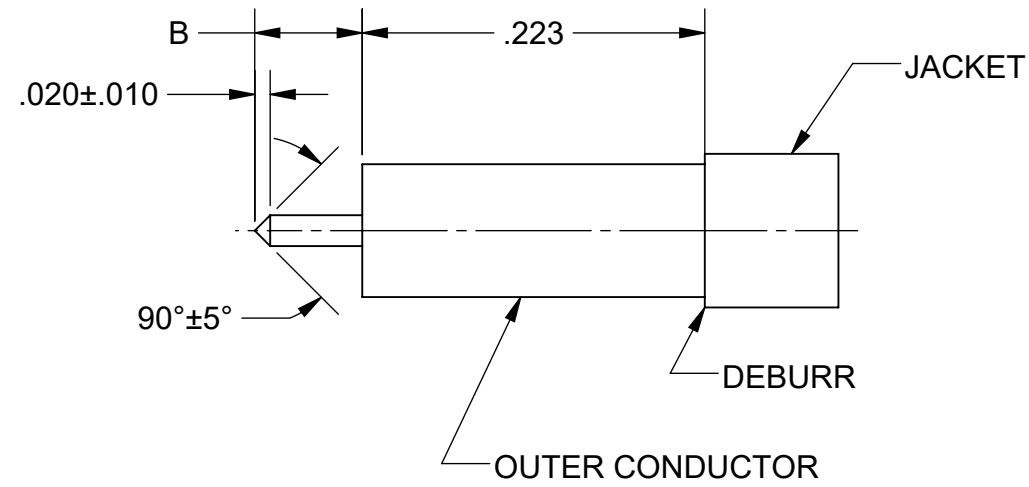
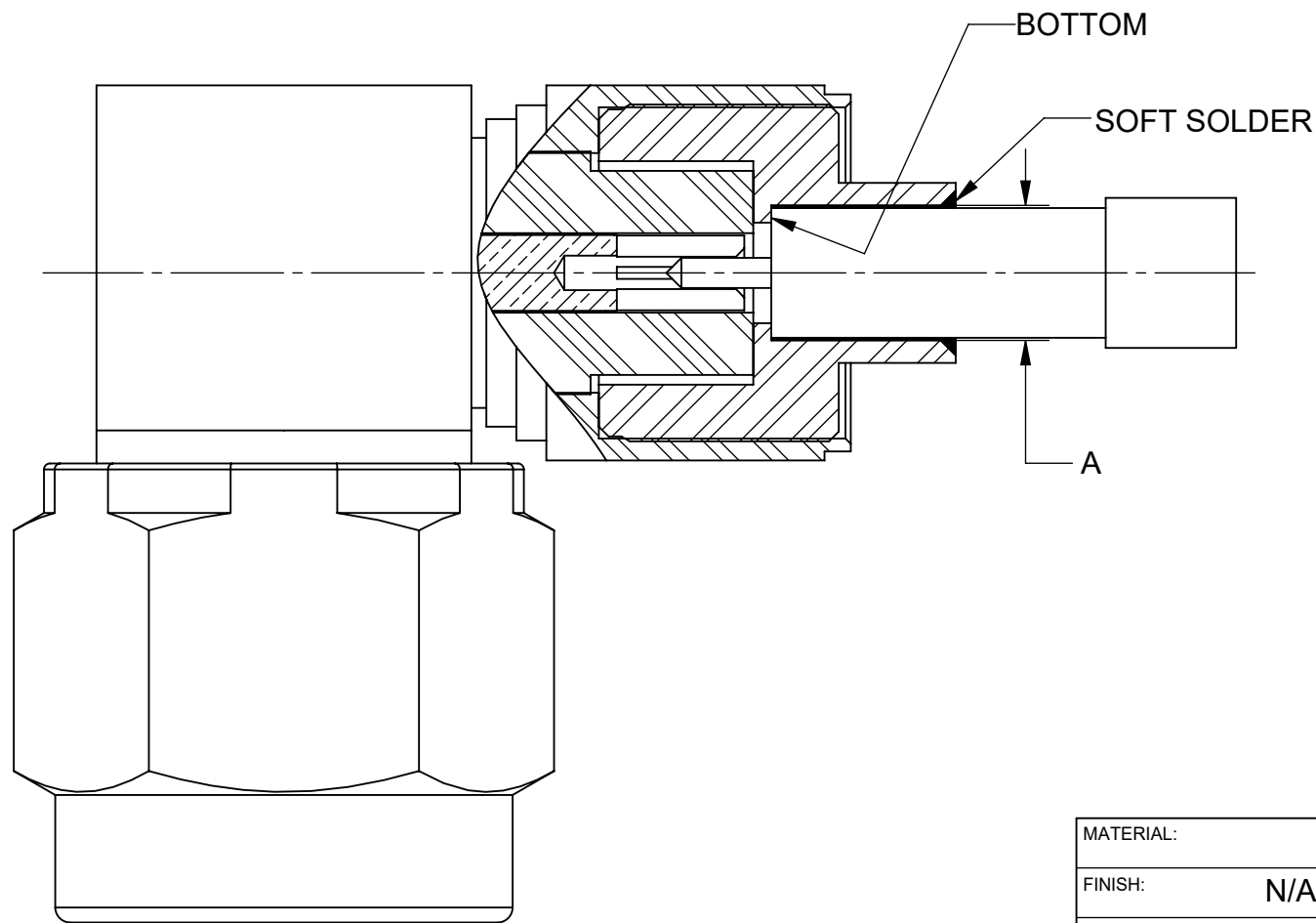


REVISION HISTORY			
REV	DESCRIPTION	DATE	APPROVED
-	REL. F-6547	7/78	DGG
A	REV F-7300	8/79	DGG
B	DCN 49159	07/19	STW



~~STEP 1:~~  
~~TRIM CABLE JACKET AND DIELECTRIC TO B DIMENSION (TABLE I).~~  
~~CHAMFER CENTER CONDUCTOR AS SHOWN (FILING IS ACCEPTABLE).~~  
~~DEBURR CABLE JACKET AS SHOWN.~~



STEP 2:  
 INSERT CABLE INTO CONNECTOR BODY UNTIL CABLE BOTTOMS IN CONNECTOR. SOFT SOLDER CABLE JACKET TO CONNECTOR BODY AS SHOWN.

TABLE I		
CABLE APPLICATION (*)	Ø A	B
RG-402/U T-FLEX 402	.144±.001	.085
RG-405/U T-FLEX 405	.090±.001	.070

\* LATEST VERSION APPLIES

MATERIAL:	
FINISH:	N/A
SURFACE AREA:	
	<b>PROPRIETARY</b>
THE INFORMATION CONTAINED IN THIS DRAWING IS THE SOLE PROPERTY OF SV MICROWAVE, INC. ANY REPRODUCTION IN PART OR AS A WHOLE WITHOUT THE WRITTEN PERMISSION OF SV MICROWAVE, INC IS PROHIBITED.	
SF2915-6605	
USED ON:	

DIMENSIONS ARE IN INCHES TOLERANCES:	
FRACTIONAL: ±1/64	ANGULAR: X° ±1'0" X'X' ±15'
DECIMAL: X ±.030	.XX ±.010
	.XXX ±.005
INTERPRET DIMENSIONS AND TOLERANCES PER ASME Y14.5M - 1994	
THIRD ANGLE PROJECTION	

UNLESS OTHERWISE SPECIFIED	
1) ALL DIMENSIONS ARE AFTER PLATING. 2) BREAK CORNERS & EDGES .005 R. MAX. 3) CHAM. 1ST & LAST THREADS. 4) SURFACE ROUGHNESS 63 / MIL-STD-10. 5) DIA.'S ON COMMON CENTERS TO BE CONCENTRIC WITHIN .005 T.I.R. 6) REMOVE ALL BURRS	
DRAWN:	ND 7/3/78
CHECKED:	
APPROVED:	DGG 7/5/78
E.M. SIMULATION:	N/A

2400 Centrepark West Drive, Suite 100  
 West Palm Beach, FL 33409

TITLE:

SIZE	CAGE CODE	DWG. NO.
B	95077	300-80-156

SCALE: 8:1 SHEET 1 OF 1