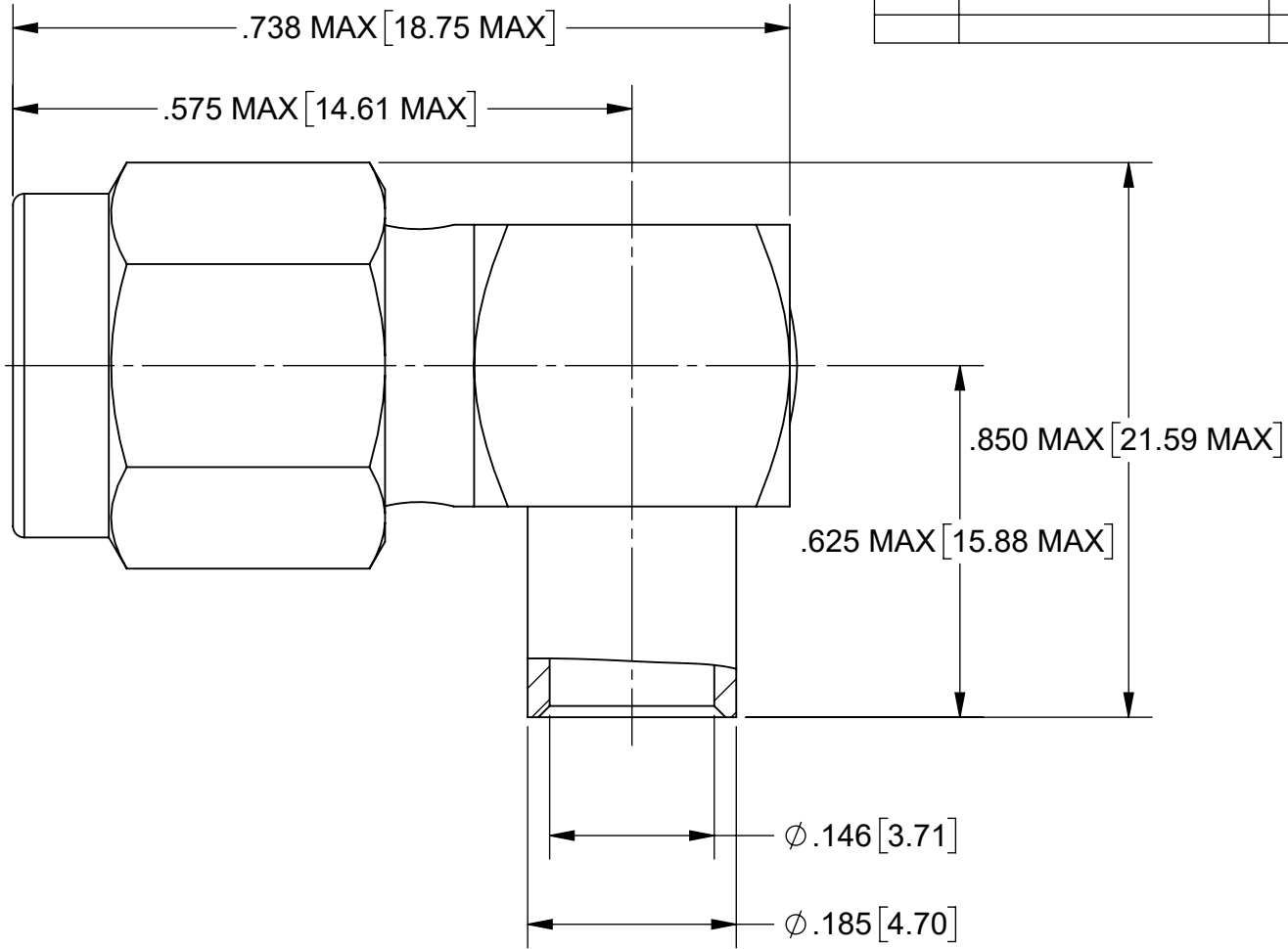
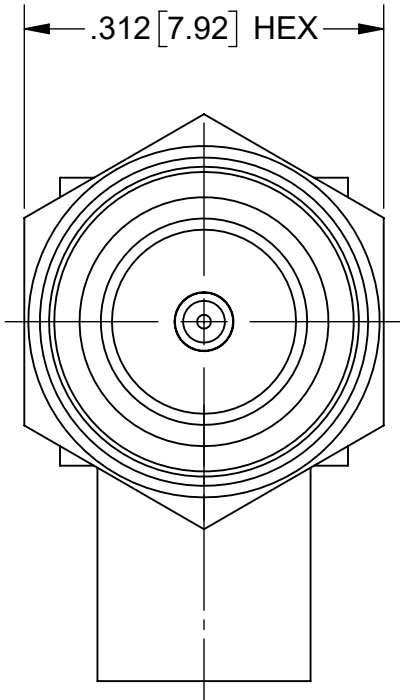
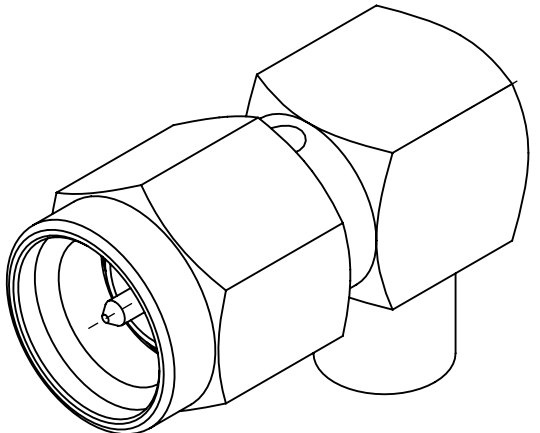


# PRODUCT DATA DRAWING

REVISION HISTORY			
REV	DESCRIPTION	DATE	APPROVED
A	REV. DCN 51690	06/13/22	SEE PDM



- MATERIAL:**
- BODY & COUPLING NUT:** STAINLESS STEEL PER AMS 5640, ALLOY UNS S30300, TYPE 1 OR ASTM A582, TYPE 303, CONDITION A.
- CONTACT:** BERYLLIUM COPPER PER ASTM B196, ALLOY No. UNS C17300, TD04.
- LOCK RING:** BERYLLIUM COPPER PER ASTM B194, B196 OR B197 ALLOY No. UNS C17200 OR C17300.
- PRESS CAP:** STAINLESS STEEL PER ASTM A240, TYPE 304.
- INSULATOR:** PTFE PER ASTM D1710, TYPE I, GRADE 1, CLASS B.
- GASKET:** SILICONE RUBBER PER A-A-59588, CLASS 2B, GRADE 60/70.
- FINISH:**
- COUPLING NUT:** PASSIVATED PER AMS 2700.
- BODY & PRESS CAP:** GOLD PER MIL-DTL-45204, TYPE II, GRADE C, CLASS 1 OVER NICKEL PER AMS-QQ-N-290, CLASS 1, .000050" MIN.
- CONTACT:** GOLD PER ASTM B488, TYPE II, CODE C, CLASS 1.27 OVER NICKEL PER AMS-QQ-N-290, CLASS 1, .000050" MIN.



- PERFORMANCE:**
- IMPEDANCE:** 50 OHMS
- FREQ. RANGE:** DC TO 12.4 GHz
- VSWR:** 1.01+.01F (GHz) DC TO 12.4 GHz OR APPROXIMATELY 80% OF THE UPPER CUTOFF FREQUENCY OF THE CABLE WHICHEVER IS LOWER.
- DWV:** 1000 VRMS.
- INSUL. RESISTANCE:** 5000 MEGOHMS

MATERIAL:	SEE NOTES	DIMENSIONS ARE IN INCHES TOLERANCES:	UNLESS OTHERWISE SPECIFIED	
FINISH:	SEE NOTES	FRACTIONAL: $\pm 1/64$ ANGULAR: X° $\pm 1'0''$ X'X' $\pm 15''$	1) ALL DIMENSIONS ARE IN INCHES (MILLIMETERS) 2) ALL DIMENSIONS ARE AFTER PLATING. 3) BREAK CORNERS & EDGES .005 R. MAX. 4) CHAM. 1ST & LAST THREADS. 5) SURFACE ROUGHNESS 63-MIL-STD-10. 6) DIA: 'S ON COMMON CENTERS TO BE CONCENTRIC WITHIN .005 T.I.R. 7) REMOVE ALL BURRS	TITLE:
SURFACE AREA:	N/A	DECIMAL: X $\pm .030$ .XX $\pm .010$ .XXX $\pm .005$	INTERPRET DIMENSIONS AND TOLERANCES PER ASME Y14.5M - 1994	SMA PLUG FOR .141 SR CABLE
<b>PROPRIETARY</b>		THIRD ANGLE PROJECTION		SIZE DWG. NO.
THE INFORMATION CONTAINED IN THIS DRAWING IS THE SOLE PROPERTY OF SV MICROWAVE, INC. ANY REPRODUCTION IN PART OR AS A WHOLE WITHOUT THE WRITTEN PERMISSION OF SV MICROWAVE, INC IS PROHIBITED.				B M39012/80-3108
		DRAWN: PJS 03/29/11		SCALE: 6:1
		CHECKED: SEE PDM		SHEET 1 OF 1
		APPROVED: SEE PDM		