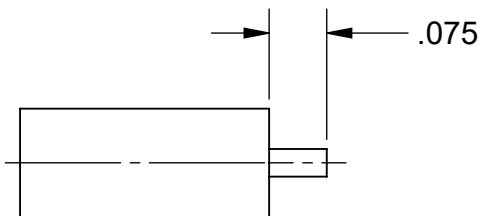
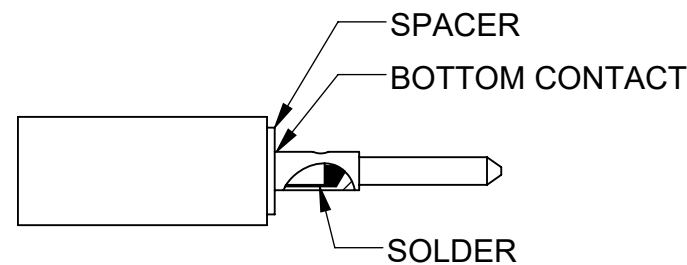


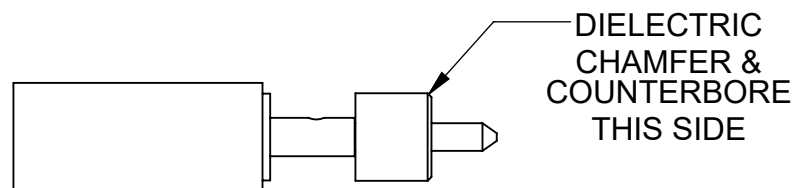
REVISION HISTORY			
REV	DESCRIPTION	DATE	APPROVED
-	REL. NRN 46414	11/23/21	SEE PDM



STEP 1.
TRIM CABLE TO DIMENSIONS SHOWN.
BE CAREFUL NOT TO NICK CENTER CONDUCTOR.



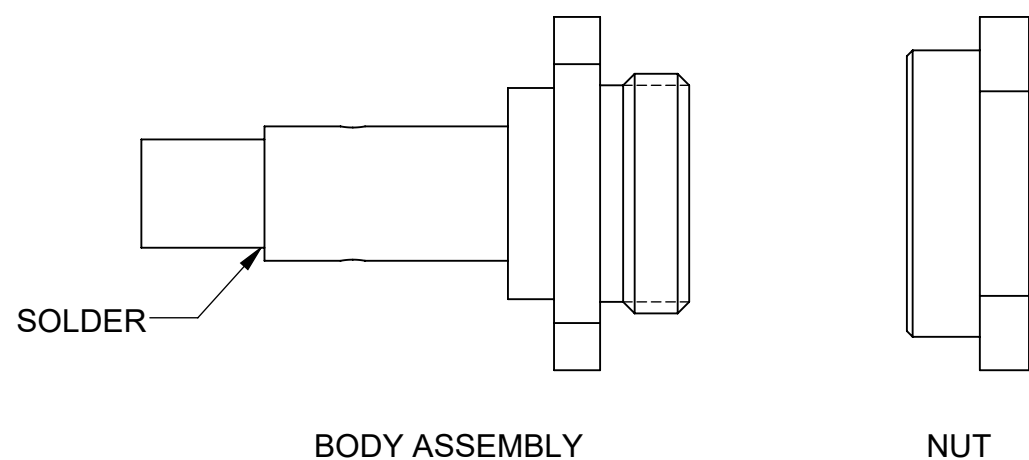
STEP 2.
SLIDE INSULATOR SPACER ONTO CABLE CENTER CONDUCTOR.
BOTTOM CONTACT ON SPACER AND SOLDER.



STEP 3.
SLIDE DIELECTRIC ONTO CONTACT
NOTE ORIENTATION OF DIELECTRIC, CHAMFER AND COUNTERBORE.

STEP 4.
SLIDE PREPARED CABLE INTO REAR OF CONNECTOR UNTIL IT BOTTOMS.
HOLDING SECURELY, SOFT SOLDER CABLE TO CONNECTOR BODY.

STEP 5.
INSTALL THE ASSEMBLY THROUGH THE BULKHEAD & ASSEMBLE NUT.
TIGHTEN WITH A TORQUE OF 25-30 IN-LBS.



BODY ASSEMBLY

NUT

MATERIAL:	N/A
FINISH:	N/A
SURFACE AREA:	N/A
PROPRIETARY	
THE INFORMATION CONTAINED IN THIS DRAWING IS THE SOLE PROPERTY OF SV MICROWAVE, INC. ANY REPRODUCTION IN PART OR AS A WHOLE WITHOUT THE WRITTEN PERMISSION OF SV MICROWAVE, INC IS PROHIBITED.	
4911-60020	USED ON:

DIMENSIONS ARE IN INCHES TOLERANCES:	
FRACTIONAL: ±1/64	ANGULAR: X° ±1°0' X°X' ±15'
DECIMAL: X ±.030	.XX ±.010
	.XXX ±.005
INTERPRET DIMENSIONS AND TOLERANCES PER ASME Y14.5M - 1994	
THIRD ANGLE PROJECTION	

UNLESS OTHERWISE SPECIFIED	
1) ALL DIMENSIONS ARE AFTER PLATING. 2) BREAK CORNERS & EDGES .005 R. MAX. 3) CHAM. 1ST & LAST THREADS. 4) SURFACE ROUGHNESS 63 / MIL-STD-10. 5) DIA.'S ON COMMON CENTERS TO BE CONCENTRIC WITHIN .005 T.I.R. 6) REMOVE ALL BURRS	
DRAWN:	JMC 11/30/21
CHECKED:	SEE PDM
APPROVED:	SEE PDM
E.M. SIMULATION:	N/A

TITLE: **SVMS PLUG BULHEAD MT FOR Ø.141 CABLE**

SIZE **B** DWG. NO. **300-49-003**

SCALE: 4:1 SHEET 1 OF 1