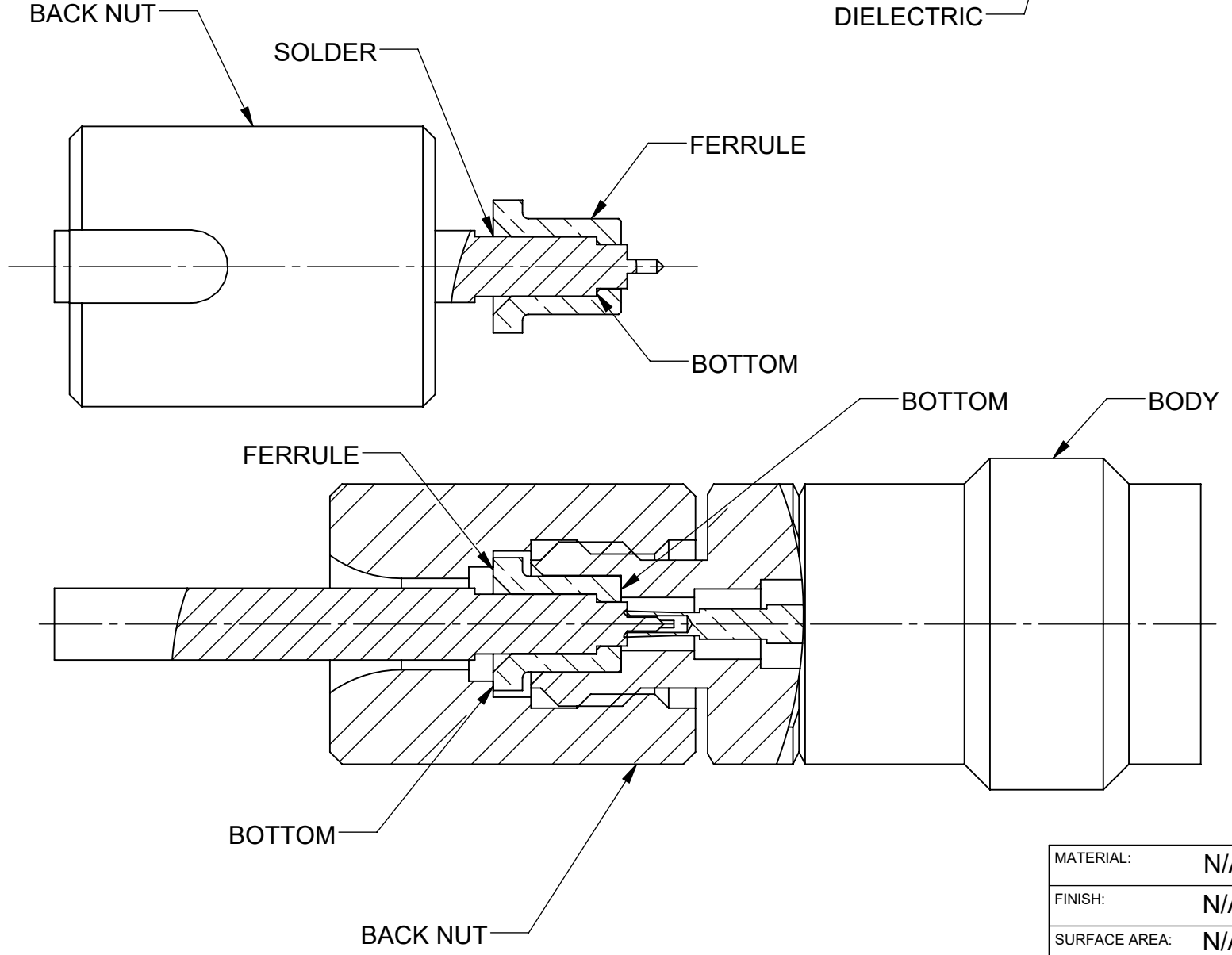
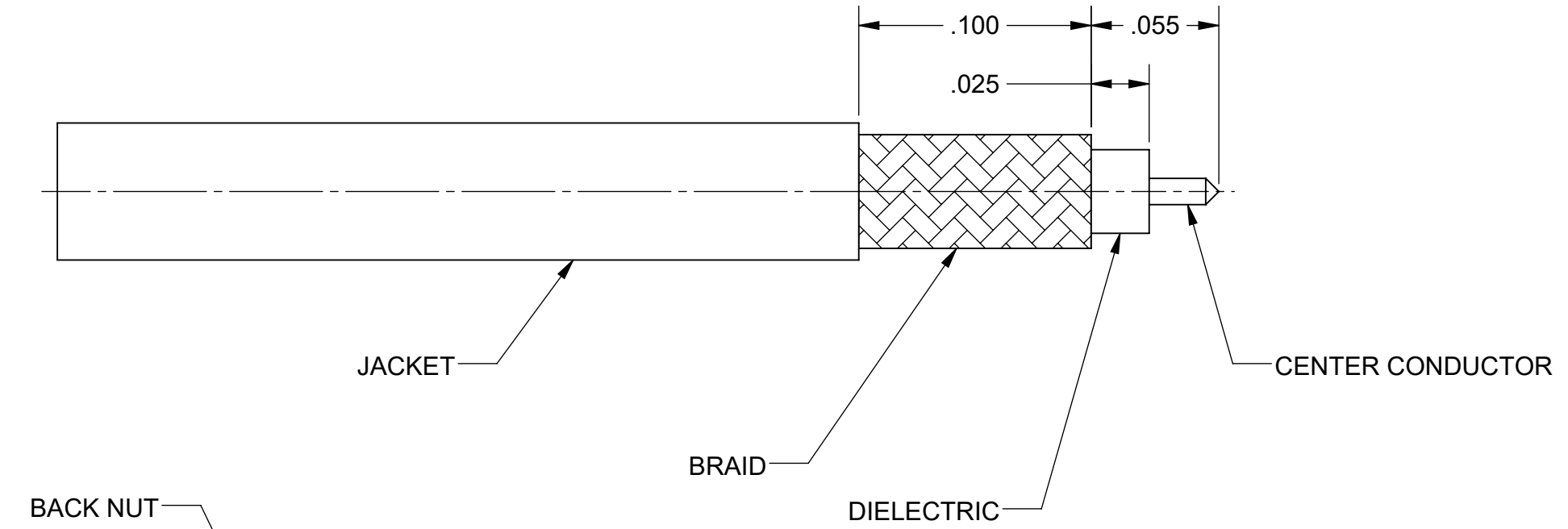


REVISION HISTORY			
REV	DESCRIPTION	DATE	APPROVED
-	NRN 46147	07/21	SEE PDM



1. SLIDE BACK NUT ONTO CABLE ORIENTED AS SHOWN & TRIM CABLE TO DIMENSIONS SHOWN. BE CAREFUL NOT TO NICK BRAID OR CENTER CONDUCTOR.
2. SLIDE FERRULE OVER BRAID UNTIL IT BUTTS AGAINST DIELECTRIC. SOLDER FERRULE TO BRAID. TRIM EXCESS DIELECTRIC.
3. PLUG CABLE INTO CONNECTOR UNTIL FERRULE BOTTOMS WITH BODY.
4. TIGHTEN BACK NUT TO BODY.

MATERIAL:	N/A
FINISH:	N/A
SURFACE AREA:	N/A
PROPRIETARY	
THE INFORMATION CONTAINED IN THIS DRAWING IS THE SOLE PROPERTY OF SV MICROWAVE, INC. ANY REPRODUCTION IN PART OR AS A WHOLE WITHOUT THE WRITTEN PERMISSION OF SV MICROWAVE, INC IS PROHIBITED.	

DIMENSIONS ARE IN INCHES TOLERANCES:	
FRACTIONAL:	±1/64 ANGULAR: X° ±1°0' X°X' ±15'
DECIMAL:	X ±.030 .XX ±.010 .XXX ±.005
INTERPRET DIMENSIONS AND TOLERANCES PER ASME Y14.5M - 1994	
THIRD ANGLE PROJECTION	

UNLESS OTHERWISE SPECIFIED	
1) ALL DIMENSIONS ARE AFTER PLATING. 2) BREAK CORNERS & EDGES .005 R. MAX. 3) CHAM. 1ST & LAST THREADS. 4) SURFACE ROUGHNESS 63 / MIL-STD-10. 5) DIA.'S ON COMMON CENTERS TO BE CONCENTRIC WITHIN .004 T.I.R. 6) REMOVE ALL BURRS	
DRAWN:	TSW 07/22/21
CHECKED:	SEE PDM
APPROVED:	SEE PDM
E.M. SIMULATION:	N/A



TITLE: CABLE ASSEMBLY INSTRUCTIONS	
SIZE B	DWG. NO. 300-33-012
SCALE: 15:1	SHEET 1 OF 1

3321-60063
USED ON: