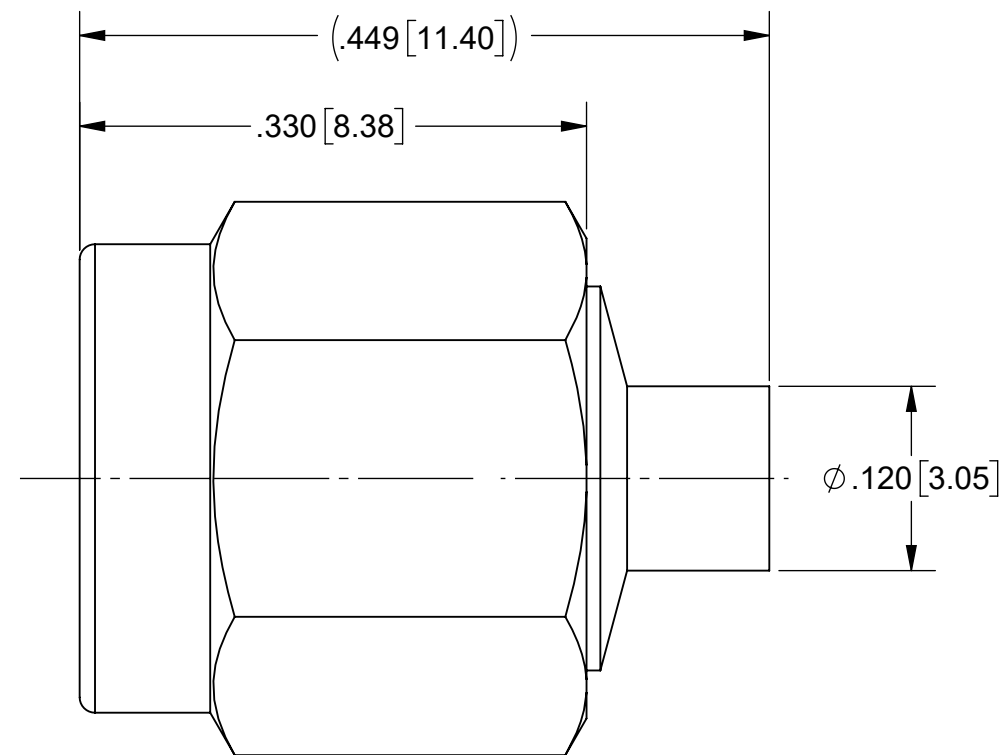
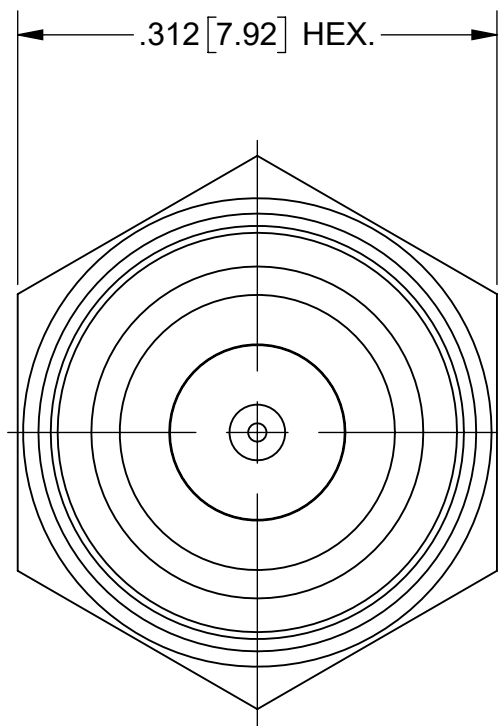
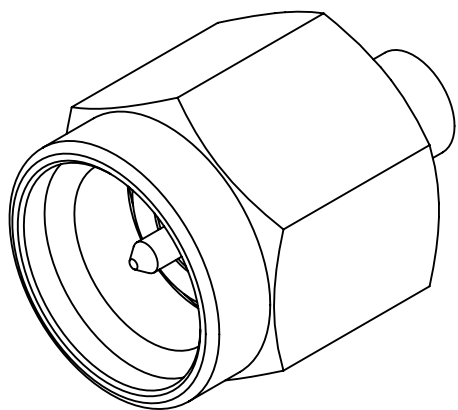


# PRODUCT DATA DRAWING

REVISION HISTORY			
REV	DESCRIPTION	DATE	APPROVED
-	NRN 47897	8/24	SEE PDM



## MATERIAL:

BODY, &  
COUPLING NUT:

STAINLESS STEEL PER AMS 5640,  
ALLOY UNS S30300, TYPE 1  
OR ASTM A582 TYPE 303, CONDITION A.

LOCK RING  
& CONTACT:

BERYLLIUM COPPER PER ASTM B194, B196 OR B197,  
ALLOY No. UNS C17200 OR C17300.

INSULATOR:

PTFE PER ASTM D1710, TYPE I, GRADE 1, CLASS B.

GASKET:

SILICONE RUBBER PER A-A-59588,  
CLASS 2B, GRADE 60/70.

## FINISH:

COUPLING NUT:

PASSIVATED PER AMS-2700

BODY &  
CONTACT:


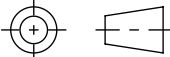
GOLD PER ASTM B488, TYPE II,  
CODE C, CLASS .76, OVER NICKEL  
PER AMS-QQ-N-290, CLASS 1, .0001" MIN.

## PERFORMANCE:

IMPEDANCE:  
FREQ. RANGE:

50 OHMS  
DC TO 18.0 GHz.

NOTES:  
1. CENTER CONTACT HELD CAPTIVE.

MATERIAL:	SEE NOTES	DIMENSIONS ARE IN INCHES TOLERANCES:	UNLESS OTHERWISE SPECIFIED 1) ALL DIMENSIONS ARE IN INCHES (MILLIMETERS) 2) ALL DIMENSIONS ARE AFTER PLATING. 3) BREAK CORNERS & EDGES .005 R. MAX. 4) CHAM. 1ST & LAST THREADS. 5) SURFACE ROUGHNESS 63-MIL-STD-10. 6) DIA: 'S ON COMMON CENTERS TO BE CONCENTRIC WITHIN .005 T.I.R. 7) REMOVE ALL BURRS	 www.svmicrowave.com TITLE: <b>SMA STR. PLUG FOR Ø.085 CABLE</b>
FINISH:	SEE NOTES	FRACTIONAL: $\pm 1/64$ ANGULAR: X° $\pm 1'0''$ X'X' $\pm 15''$ DECIMAL: X $\pm .030$ .XX $\pm .010$ .XXX $\pm .005$ INTERPRET DIMENSIONS AND TOLERANCES PER ASME Y14.5M - 1994		
SURFACE AREA:	N/A	THIRD ANGLE PROJECTION	DRAWN: CVL 8/8/24	SIZE DWG. NO. <b>B</b> 2911-61069
<b>PROPRIETARY</b> THE INFORMATION CONTAINED IN THIS DRAWING IS THE SOLE PROPERTY OF SV MICROWAVE, INC. ANY REPRODUCTION IN PART OR AS A WHOLE WITHOUT THE WRITTEN PERMISSION OF SV MICROWAVE, INC IS PROHIBITED.			CHECKED: SEE PDM	SCALE: 8:1
			APPROVED: SEE PDM	SHEET 1 OF 1