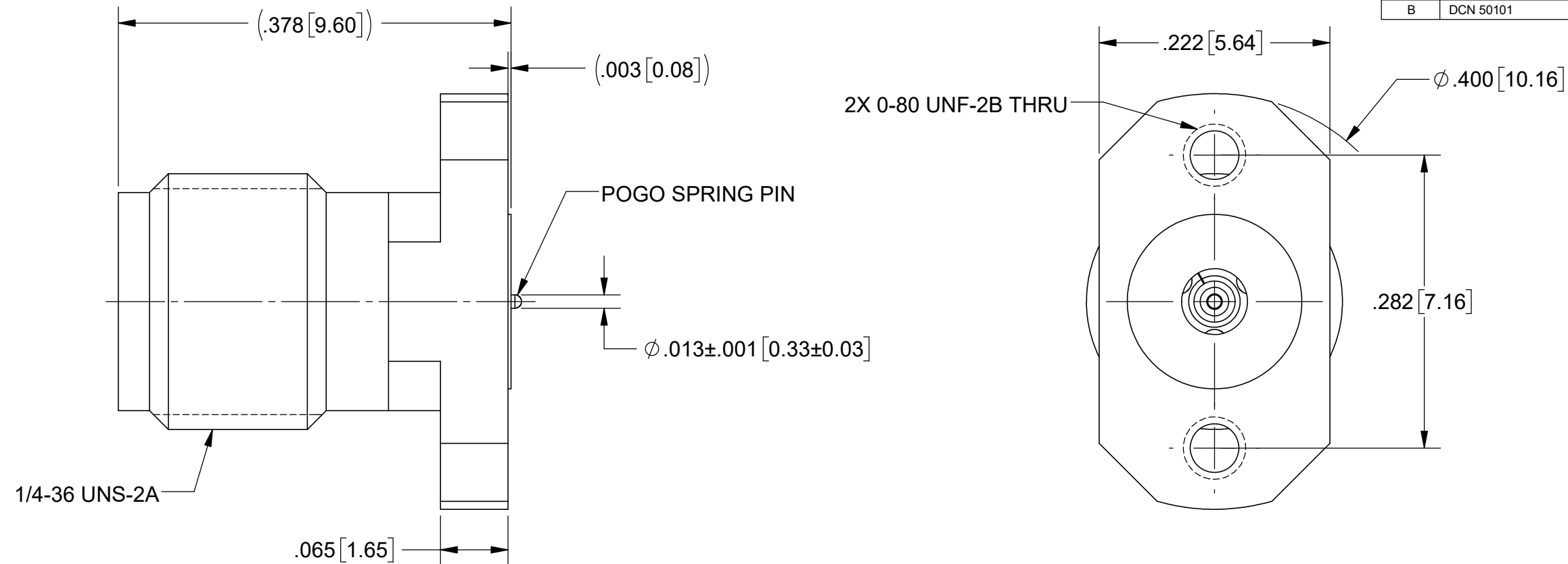
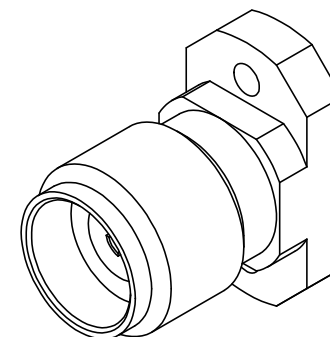
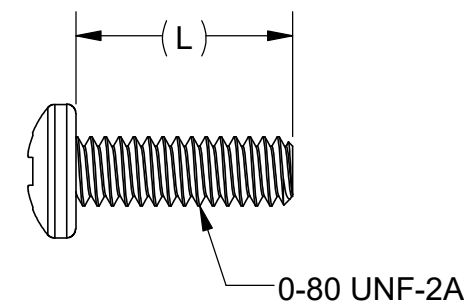


PRODUCT DATA DRAWING

REVISION HISTORY			
REV	DESCRIPTION	DATE	APPROVED
-	DCN 47331	04/18	JMS
A	REV. DCN 47447	05/14/18	STW
B	DCN 50101	08/20	BNK



- MATERIAL:**
- BODY & INSERT:** STAINLESS STEEL PER AMS 5640, ALLOY UNS S30300, TYPE 1 OR ASTM A582, TYPE 303, CONDITION A.
- CONTACT:** BERYLLIUM COPPER PER ASTM B196, ALLOY No. UNS C17300, TD04.
- INSULATOR:** PEI (ULTEM 1000) PER ASTM D5205.
- SCREWS:** 300 SERIES STAINLESS STEEL.
- FINISH:**
- BODY, INSERT & SCREWS:** PASSIVATED PER AMS 2700.
- CONTACT:** GOLD PER ASTM B488, TYPE II, CODE C, CLASS .76, OVER NICKEL PER AMS-QQ-N-290, CLASS 1, .00005" MIN.
- PERFORMANCE:**
- IMPEDANCE:** 50 OHMS
- FREQ. RANGE:** DC TO 40.0 GHz
- VSWR:** 1.30:1 DC TO 40.0 GHz
- INSERTION LOSS:** .05 X SQRTF(F IN GHz)
- DWV:** 500 VRMS



SV P/N	DESCRIPTION	PCB THICKNESS	(L)
SF1521-60124-1S	INCL. 2 EA (.188) SCREWS	.016 TO .123	.188
SF1521-60124-2S	INCL. 2 EA (.250) SCREWS	.078 TO .185	.250
SF1521-60124-3S	INCL. 2 EA (.438) SCREWS	.266 TO .373	.438
SF1521-60124	NO SCREWS	.005 TO .373	N/A

NOTES:
 1. FOR RECOMMENDED FOOTPRINT FOR YOUR PCB, ONTACT SV MICROWAVE SALES DEPARTMENT (sales@svmicro.com, 561-840-1800)

MATERIAL: SEE NOTES	DIMENSIONS ARE IN INCHES TOLERANCES: FRACTIONAL: $\pm 1/64$ ANGULAR: X° $\pm 1'0''$ X'X' $\pm 15'$	UNLESS OTHERWISE SPECIFIED 1) ALL DIMENSIONS ARE IN INCHES (MILLIMETERS) 2) ALL DIMENSIONS ARE AFTER PLATING 3) BREAK CORNERS & EDGES .005 R. MAX. 4) CHAM. 1ST & LAST THREADS. 5) SURFACE ROUGHNESS 63-MIL-STD-10. 6) DIA. 'S ON COMMON CENTERS TO BE CONCENTRIC WITHIN .005 T.I.R. 7) REMOVE ALL BURRS	 www.svmicrowave.com TITLE: 2.92mm FEMALE 2 HOLE FLANGE MOUNT W/ SPRING PIN FOR STRIPLINE DWG. NO. SF1521-60124-XS
FINISH: SEE NOTES	DECIMAL: X $\pm .030$ XX $\pm .010$ XXX $\pm .005$		
SURFACE AREA: N/A	INTERPRET DIMENSIONS AND TOLERANCES PER ASME Y14.5M - 1994	THIRD ANGLE PROJECTION	DRAWN: VB 04/02/18 CHECKED: JMS 04/02/18 APPROVED: JMS 04/02/18
PROPRIETARY THE INFORMATION CONTAINED IN THIS DRAWING IS THE SOLE PROPERTY OF SV MICROWAVE, INC. ANY REPRODUCTION IN PART OR AS A WHOLE WITHOUT THE WRITTEN PERMISSION OF SV MICROWAVE, INC IS PROHIBITED.			SCALE: 8:1 SHEET 1 OF 1