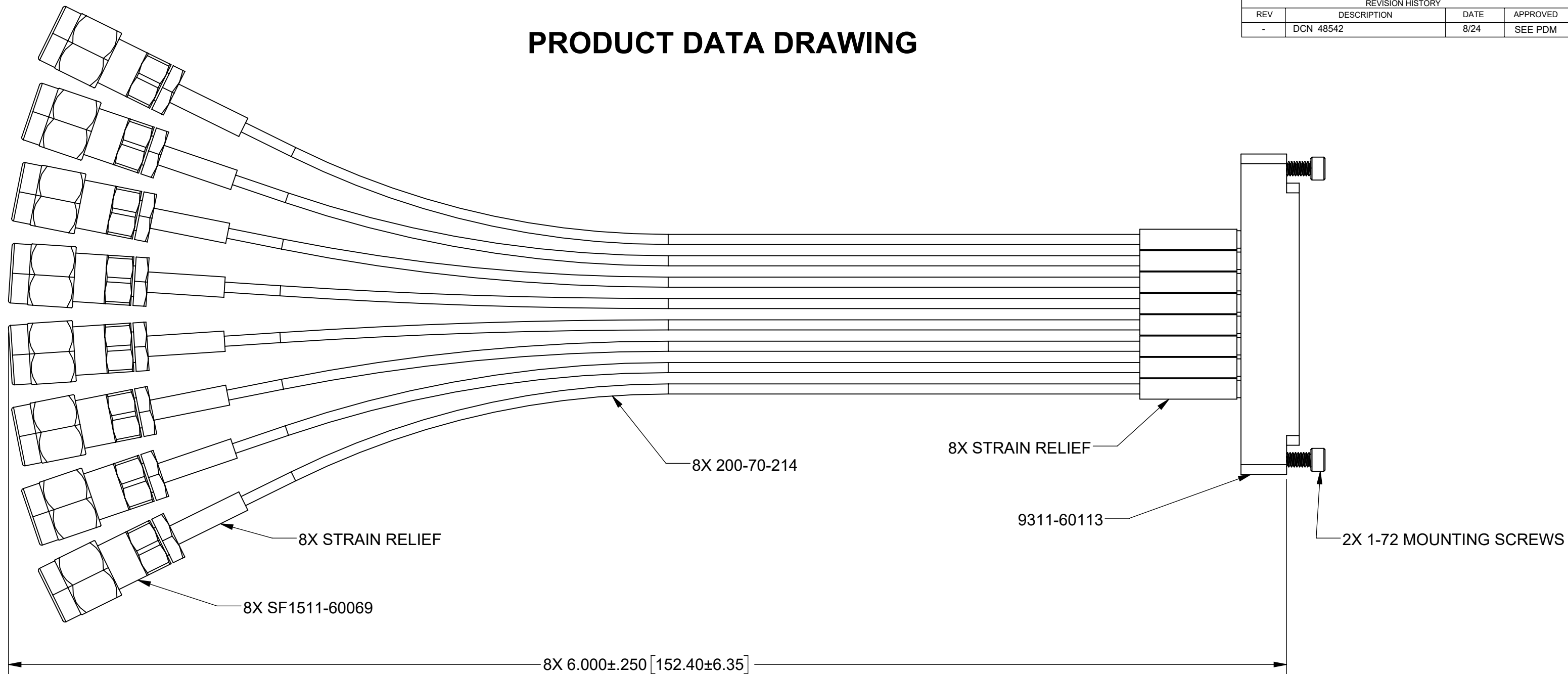


PRODUCT DATA DRAWING

REVISION HISTORY			
REV	DESCRIPTION	DATE	APPROVED
-	DCN 48542	8/24	SEE PDM



MATERIAL:

CONNECTORS: MDRF SMPS MALE (SB) (3811-60044)
2.92mm MALE (SF1511-60069)
8-PORT MDRF PANEL MOUNT (9311-60113)

CABLE: Ø.047 FLEXTRA (200-70-214)

STRAIN RELIEF: M23053/5

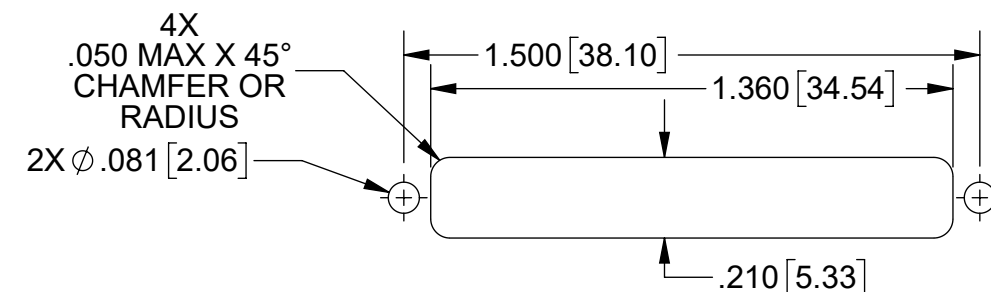
MOUNTING SCREWS: 1-72 UNF X .250" LONG 18-8 STAINLESS STEEL

PERFORMANCE:

IMPEDANCE: 50 OHMS
FREQ. RANGE: DC TO 40.0 GHz.

NOTES:

- DESIGNED TO MATE TO 7038-0211 OR SIMILAR.



RECOMMENDED MOUNTING PATTERN

MATERIAL: SEE NOTES	DIMENSIONS ARE IN INCHES TOLERANCES: FRACTIONAL: $\pm 1/64$ ANGULAR: X° $\pm 1'0''$ X°X' $\pm 15''$	UNLESS OTHERWISE SPECIFIED 1) ALL DIMENSIONS ARE IN INCHES (MILLIMETERS) 2) ALL DIMENSIONS ARE AFTER PLATING. 3) BREAK CORNERS & EDGES .005 R. MAX. 4) CHAM. 1ST & LAST THREADS. 5) SURFACE ROUGHNESS 63-MIL-STD-10. 6) DIA.'S ON COMMON CENTERS TO BE CONCENTRIC WITHIN .005 T.I.R. 7) REMOVE ALL BURRS	 TITLE: 8-PORT MDRF PANEL MOUNT TO 2.92mm MALE STD FLEXTRA CABLE HARNESS
FINISH: SEE NOTES	DECIMAL: X $\pm .030$.XX $\pm .010$.XXX $\pm .005$	INTERPRET DIMENSIONS AND TOLERANCES PER ASME Y14.5M - 1994	
SURFACE AREA: N/A	THIRD ANGLE PROJECTION	DRAWN: JPM 08/19/24	SIZE DWG. NO. 7038-0726
PROPRIETARY THE INFORMATION CONTAINED IN THIS DRAWING IS THE SOLE PROPERTY OF SV MICROWAVE, INC. ANY REPRODUCTION IN PART OR AS A WHOLE WITHOUT THE WRITTEN PERMISSION OF SV MICROWAVE, INC IS PROHIBITED.		CHECKED: SEE PDM	SCALE: 2:1
		APPROVED: SEE PDM	SHEET 1 OF 1