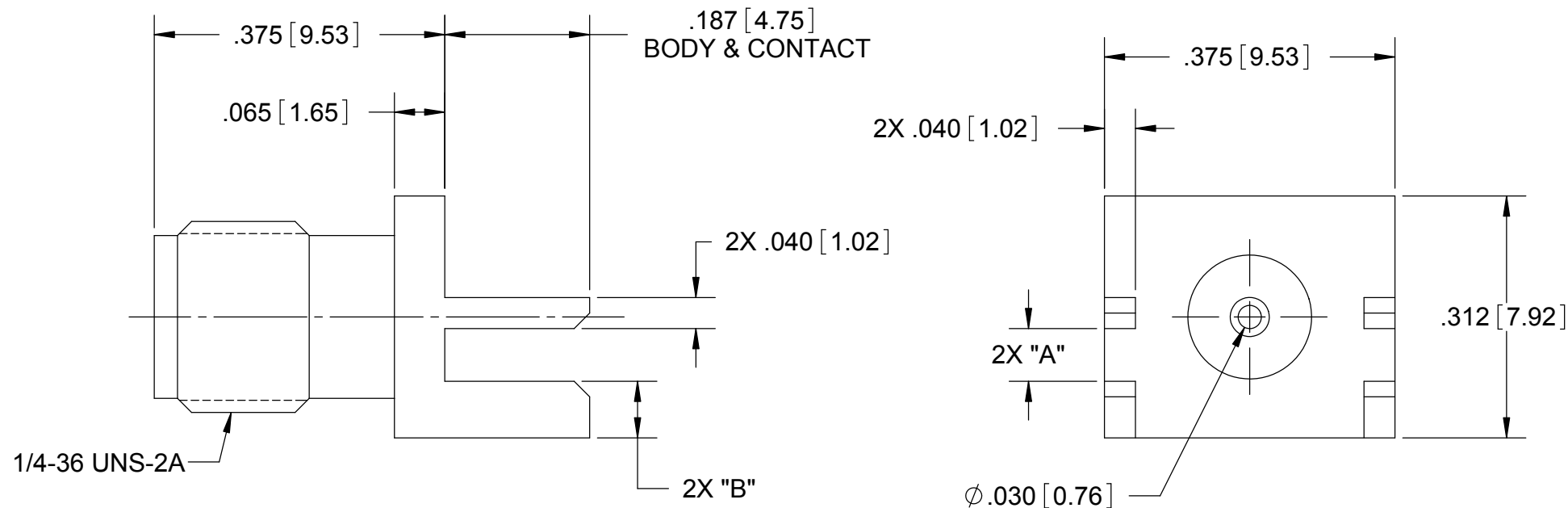


PRODUCT DATA DRAWING

REVISION HISTORY			
REV	DESCRIPTION	DATE	APPROVED
-	DCN 38497	08/11	PJS



MATERIAL:

BODY: STAINLESS STEEL PER AMS-5640, ALLOY UNS S30300, TYPE 1

CONTACT: BERYLLIUM COPPER PER ASTM B-196, ALLOY UNS C17300, TD04

INSULATOR: PTFE PER ASTM D-1710, TYPE I, GRADE 1, CLASS B

FINISHES:

BODY & CONTACT: GOLD PER ASTM B-488, TYPE II, CODE C, CLASS 1.27 OVER NICKEL PER AMS-QQ-N-290, CLASS 1, .00010" MIN.

PART No.	BOARD THICKNESS	DIMENSION "A"	DIMENSION "B"
2985-6035	.062 (1.57)	.068/.064 (1.67)	.073 (1.85)
2985-6036	.042 (1.07)	.048/.044 (1.16)	.093 (2.36)
2985-6037	.031 (0.79)	.037/.033 (0.88)	.104 (2.64)
2985-6038	.093 (2.36)	.099/.095 (2.46)	.042 (1.07)

NOTES:

1. FOR A FOOTPRINT RECOMMENDATION SPECIFIC TO YOUR PCB, PLEASE CONTACT US AT applications@svmicro.com

PERFORMANCE:

IMPEDANCE: 50 OHMS

FREQ. RANGE: DC-18 GHz

INSUL. RESIST.: 5000 MEGOHMS, MIN.

DWV: 1000 VRMS

VSWR: N/A

MATERIAL: SEE NOTES	DIMENSIONS ARE IN INCHES TOLERANCES: FRACTIONAL: $\pm 1/64$ ANGULAR: X° $\pm 1'0''$ X"X' $\pm 15'$	UNLESS OTHERWISE SPECIFIED 1) ALL DIMENSIONS ARE AFTER PLATING. 2) BREAK CORNERS & EDGES .005 R. MAX. 3) CHAM. 1ST & LAST THREADS. 4) SURFACE ROUGHNESS 63 $\sqrt{\text{MIL-STD-10}}$. 5) DIA.'S ON COMMON CENTERS TO BE CONCENTRIC WITHIN T.I.R. 6) REMOVE ALL BURRS	SV Microwave, Inc. 2400 Centrepark West Drive, Suite 100 West Palm Beach, FL 33409 TITLE: SMA JACK END LAUNCH RECEPTACLE
FINISH: SEE NOTES	DECIMAL: X ± 0.30 .XX ± 0.10 .XXX ± 0.005	INTERPRET DIMENSIONS AND TOLERANCES PER ASME Y14.5M - 1994	
SURFACE AREA: N/A	THIRD ANGLE PROJECTION	DRAWN: FED 08/25/11	SIZE: B CAGE CODE: 95077 DWG. NO.: 2985-6035-6038
PROPRIETARY THE INFORMATION CONTAINED IN THIS DRAWING IS THE SOLE PROPERTY OF SV MICROWAVE, INC. ANY REPRODUCTION IN PART OR AS A WHOLE WITHOUT THE WRITTEN PERMISSION OF SV MICROWAVE, INC IS PROHIBITED.		CHECKED: PJS 08/25/11	SCALE: 5:1
		APPROVED: PJS 08/25/11	SHEET 1 OF 1
		E.M. SIMULATION: N/A	