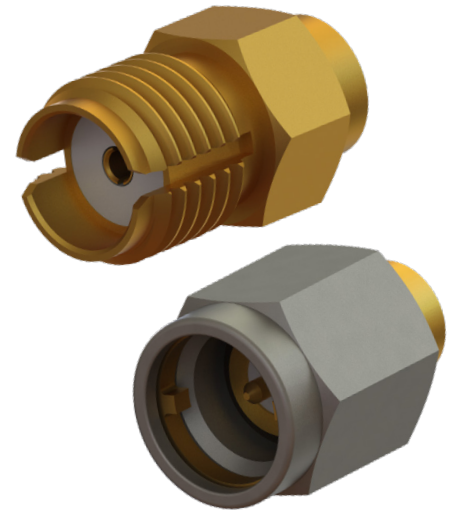


Keyed SMA Connectors

Features & Benefits

- RF performance to 26.5 GHz
- Multiple keyings available
- Same self-aligning, easy-to-use form factor as our standard SMA
- Options include adapters, cable assemblies, panel mount connectors & more
- Standard SMA male connector without keying will mate to any keyed SMA female
- Standard and custom configurations available



Applications

- Military & Aerospace
- Airborne Radar
- Automated Test Equipment (ATE)
- Transceiver Box
- Test and Instrumentation

Specifications

Electrical & Mechanical	SMA
Impedance	50Ω
Max Frequency	26.5 GHz
VSWR (Max)	1.3 : 1 @ 26.5 GHz
Mating Cycles	500
Recommended Mating Torque	7-10 in - lbs
Shielding Effectiveness	≥ -90 dB

Standard Keyed SMA Line

Sex	Cable	Part Number
Male	.047	SF2911-60967-XK
Male	.086	SF2911-60968-XK
Female	.047	SF2921-61587-XK
Female	.086	SF2921-61588-XK

Keying -1K (2 X 180°)



Keying -2K (2 X 150°)



Keying -3K (2 X 120°)



Keying -4K (2 X 90°)

